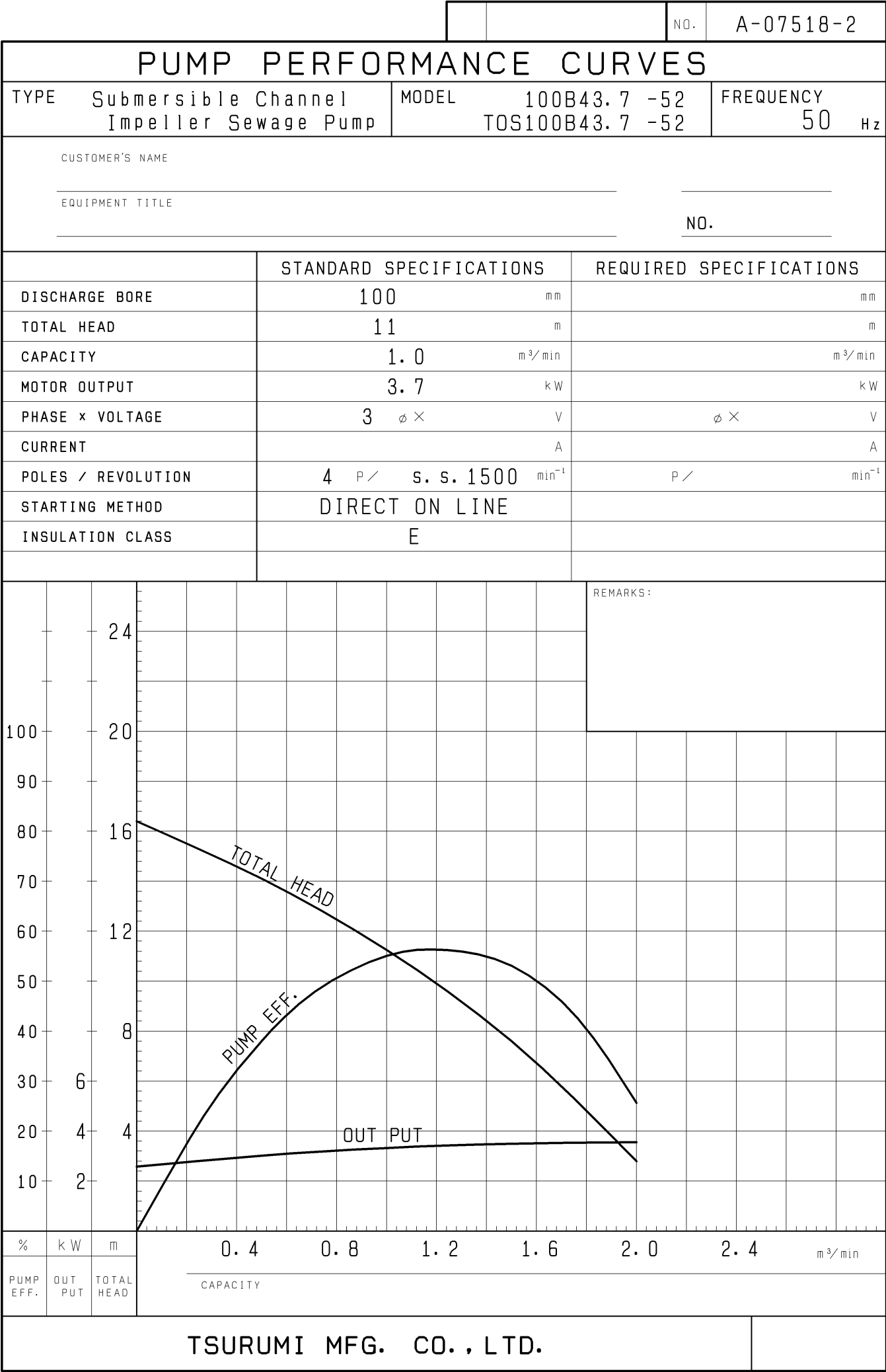
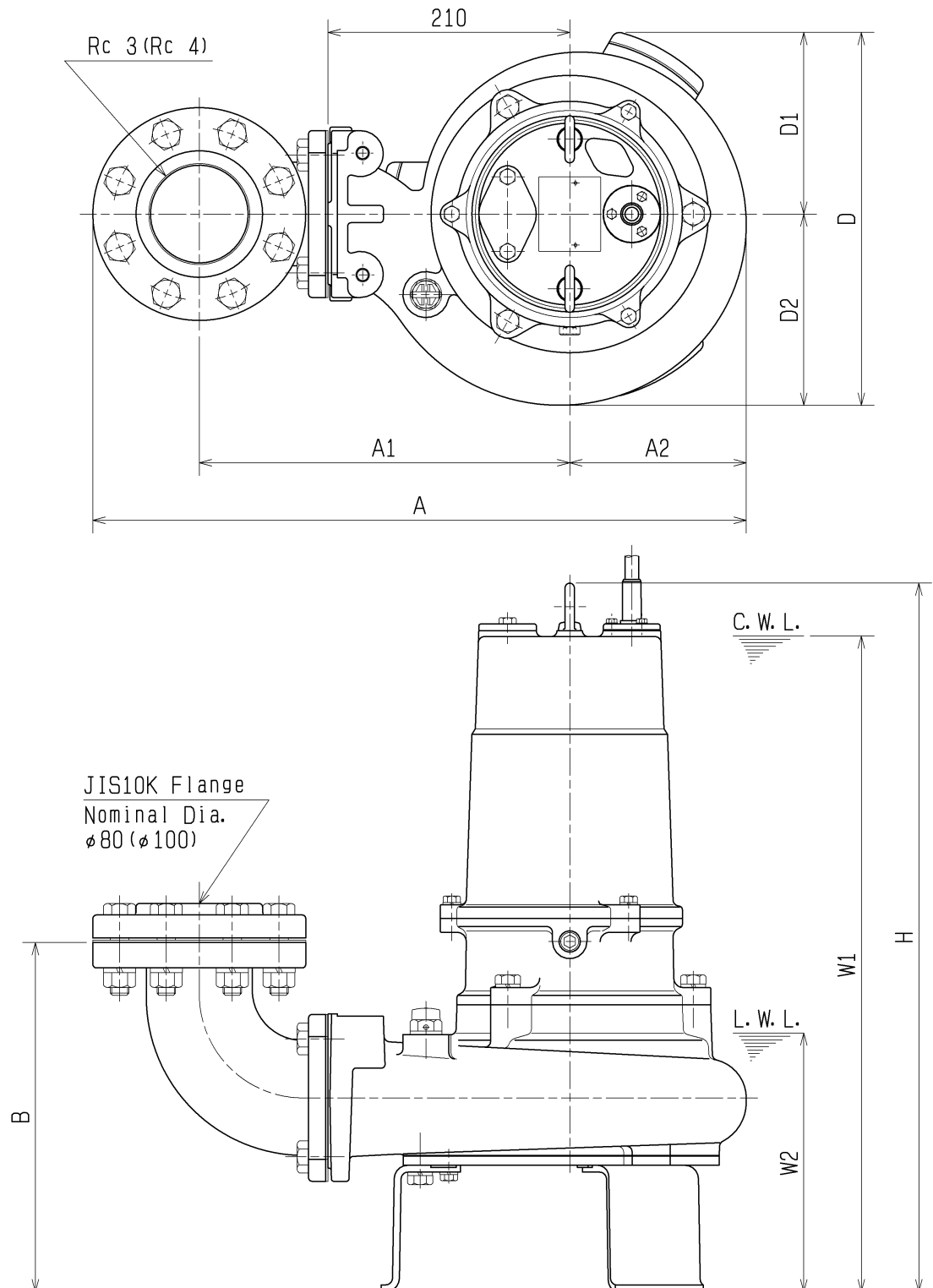


SPECIFICATIONS	Model	100B43.7	B-series								
			3.7kW, 3-phase								
<p>Type of Pump Submersible cast iron pump suitable for pumping sewage, wastewater, storm water, etc.</p> <p>Type of Fluid Sewage, wastewater, and water carrying solid matters</p> <p>Temperature: 0 to 40°C (High temperature model available on special request)</p> <p>Discharge Bore 100mm</p> <p>Motor Output 3.7kW</p> <p>Power Supply Three-phase</p> <p>Starting Method Direct on Line (Star-Delta available on special request)</p> <p>Motor Continuous-duty rated, dry-type induction motor</p> <p>Insulation Class: E (available in F on special request) Degree of Protection: IP68</p> <p>No. of Poles & Speed (Synchronous Speed) 4-pole, 1500/1800min⁻¹ (50/60Hz)</p> <p>Power Supply Voltages & Rated Currents</p> <table><tr><td>50Hz</td><td>60Hz</td></tr><tr><td>380V – 8.2A</td><td>220V – 14.2A</td></tr><tr><td>400V – 7.9A</td><td>380V – 8.0A</td></tr><tr><td>415V – 7.7A</td><td>440V – 7.1A</td></tr></table> <p>Power Cable Sheath: PVC Standard Length: 6m 380 to 600V supply: 1 × 4 × 2.0mm², O.D. 11.8mm 200 to 240V supply: 1 × 4 × 3.5mm², O.D. 13.9mm</p> <p>Dry Weight (excluding cable) Free Standing Type: 84kg Guide Rail Fitting Type: 80kg</p>		50Hz	60Hz	380V – 8.2A	220V – 14.2A	400V – 7.9A	380V – 8.0A	415V – 7.7A	440V – 7.1A	<p>Impeller Semi-open single-channel impeller for solid-handling design, dynamically balanced</p> <p>Solids Passage 50Hz – 81 × 53mm 60Hz – 81 × 47mm</p> <p>Cable Entry with Anti-Wicking Block Watertight cable entry with strain-relief device. The anti-wicking block prevents water incursion due to capillary action should the power cable be damaged or the end submerged.</p> <p>Bearings Permanently lubricated, deep-groove, double-shielded C3 ball bearings</p> <p>Shaft 420 stainless steel</p> <p>Shaft Seal (Mechanical Seal) Furnished with a double-face mechanical seal located in oil chamber. Both upper and lower seal faces always run in a clean environment.</p> <p>Upper Seal Faces: Ceramic + Carbon Lower Seal Faces: SiC + SiC</p> <p>Oil Seal (Lip Seal) Used as a “Dust Seal”, it protects the mechanical seal from abrasive particles.</p> <p>OIL LIFTER (Patented) Equipped in oil chamber. It forcibly supplies lubricating oil to the mechanical seal and continues to supply the oil to the upper seal faces even if lubricant falls below the rated volume.</p> <p>Type of Lubricating Oil & Volume Turbine Oil (ISO VG32), 1350ml</p> <p>Motor Protection Device A circle thermal protector built in the motor housing. Directly cuts the motor circuit if excessive heat builds up or an overcurrent condition occurs in the motor.</p>	
50Hz	60Hz										
380V – 8.2A	220V – 14.2A										
400V – 7.9A	380V – 8.0A										
415V – 7.7A	440V – 7.1A										
<p>Optional Accessories</p> <div><p>Bend Set (Free Standing Type)</p><ul style="list-style-type: none">• Discharge Bend• JIS 10kg/cm² Screwed Flange</div> <div><p>TOS/TS Set (Guide Rail Fitting Type)</p><ul style="list-style-type: none">• Duckfoot Bend• Guide Support• Guide Hook• Lifting Chain 5m (with Shackles)• JIS 10kg/cm² Screwed Flange (TOS Set only)</div> <div><p>External Leakage Sensor</p></div>											
TSURUMI MANUFACTURING CO., LTD.											



DIMENSION DRAWING				No.		No.	A-16067-3
TYPE	Sewage Submersible Channel Impeller Pump			MODEL	80/100B42.2	-52/62	
					80/100B43.7	-52/62	



The Figure in () shows the dimensions of discharge Bore at Nominal Dia $\phi 100$.

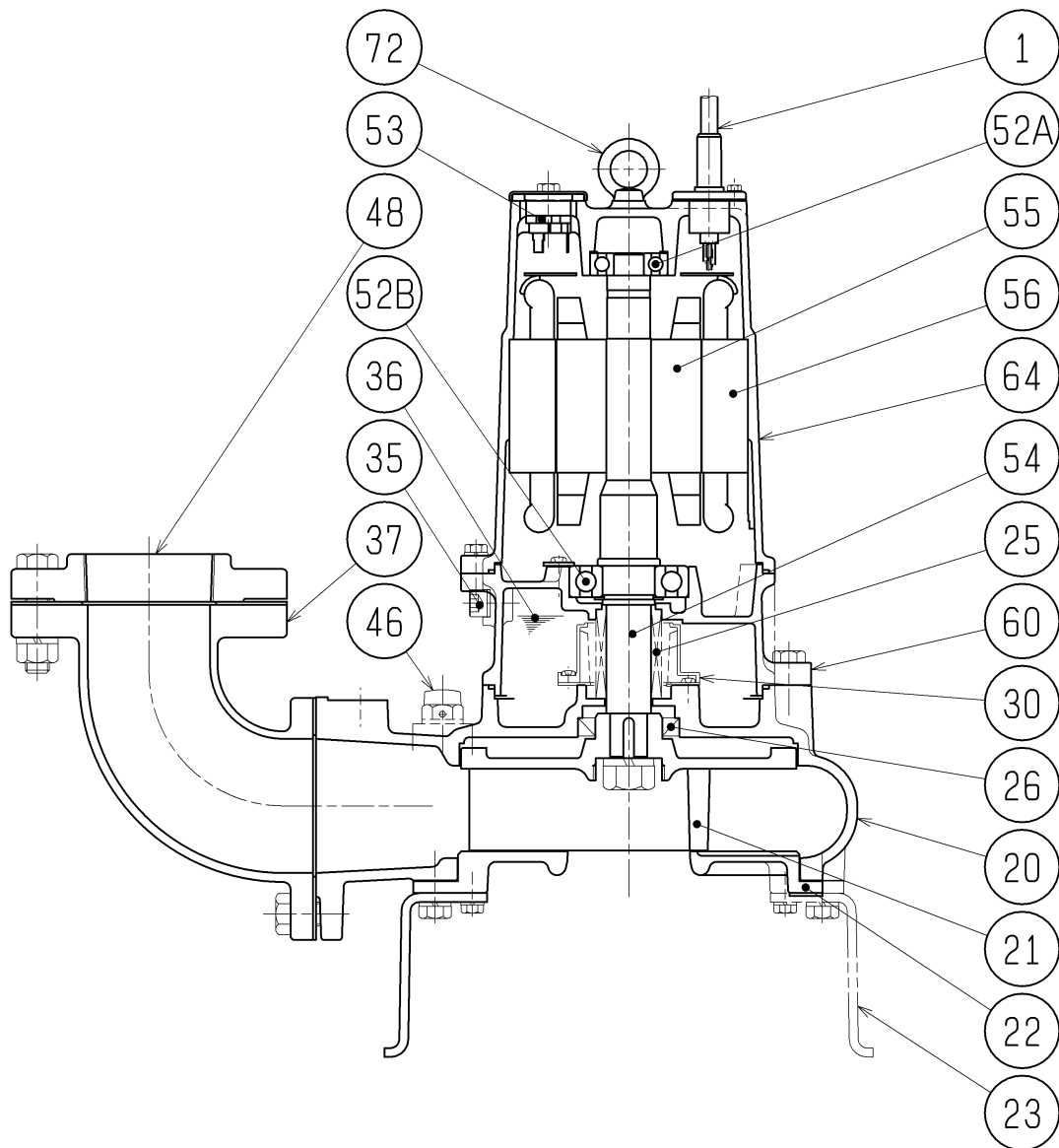
C. W. L. :Continuous running Water Level

L. W. L. :Lowest running Water Level

※excluding cable

MODEL	A	A1	A2	B	D	D1	D2	W1	W2	H	Approximate Weight (※)
80/100B42.2-52/62	568 (596)	322 (337)	154	304 (329)	324	158	166	570	225	616	68kg
80/100B43.7-52/62	574 (601)	322 (337)	159	309 (334)	333	158	175	645	235	690	84kg

SECTIONAL DRAWING			No.		No.	A-19419-2
TYPE	Sewage Submersible Channel Impeller Pump		MODEL	80/100B42.2	-52/62	
				80/100B43.7	-52/62	



		2.2kW	3.7kW				REQ. SPECIFICATION	
※1	H-30A		H-35A					
※2	TC456812		TC507212					
※3	6307ZZC3		6309ZZC3	※4 the wetted part				
No.	DESCRIPTION	Q'TY	MATERIAL / NOTE		No.	DESCRIPTION	Q'TY	MATERIAL / NOTE
1	Cabletyre Cable	1	PVC Sheath		48	Screwed Flange	1	Gray Iron Casting
20	Pump Casing	1	Gray Iron Casting		52A	Upper Bearing	1	6304ZZC3
21	Impeller	1	Gray Iron Casting		52B	Lower Bearing	1	※3
22	Suction Cover	1	Gray Iron Casting		53	Motor Protector	1	
23	Stand	3	Steel Plate		54	Shaft	1	Stainless Steel 420J2(※4)
25	Mechanical Seal	1	※1		55	Rotor	1	
26	Oil Seal	1	※2		56	Stator	1	
30	Oil Lifter	1	Plastic		60	Bearing Housing	1	Gray Iron Casting
35	Oil Plug	1	Stainless Steel 304		64	Motor Frame	1	Gray Iron Casting
36	Lubricant		Turbine Oil (ISO VG32)		72	Eye Bolt	2	Stainless Steel 304
37	Discharge Bend	1	Gray Iron Casting					
46	Air Release Valve	1	Nylon					