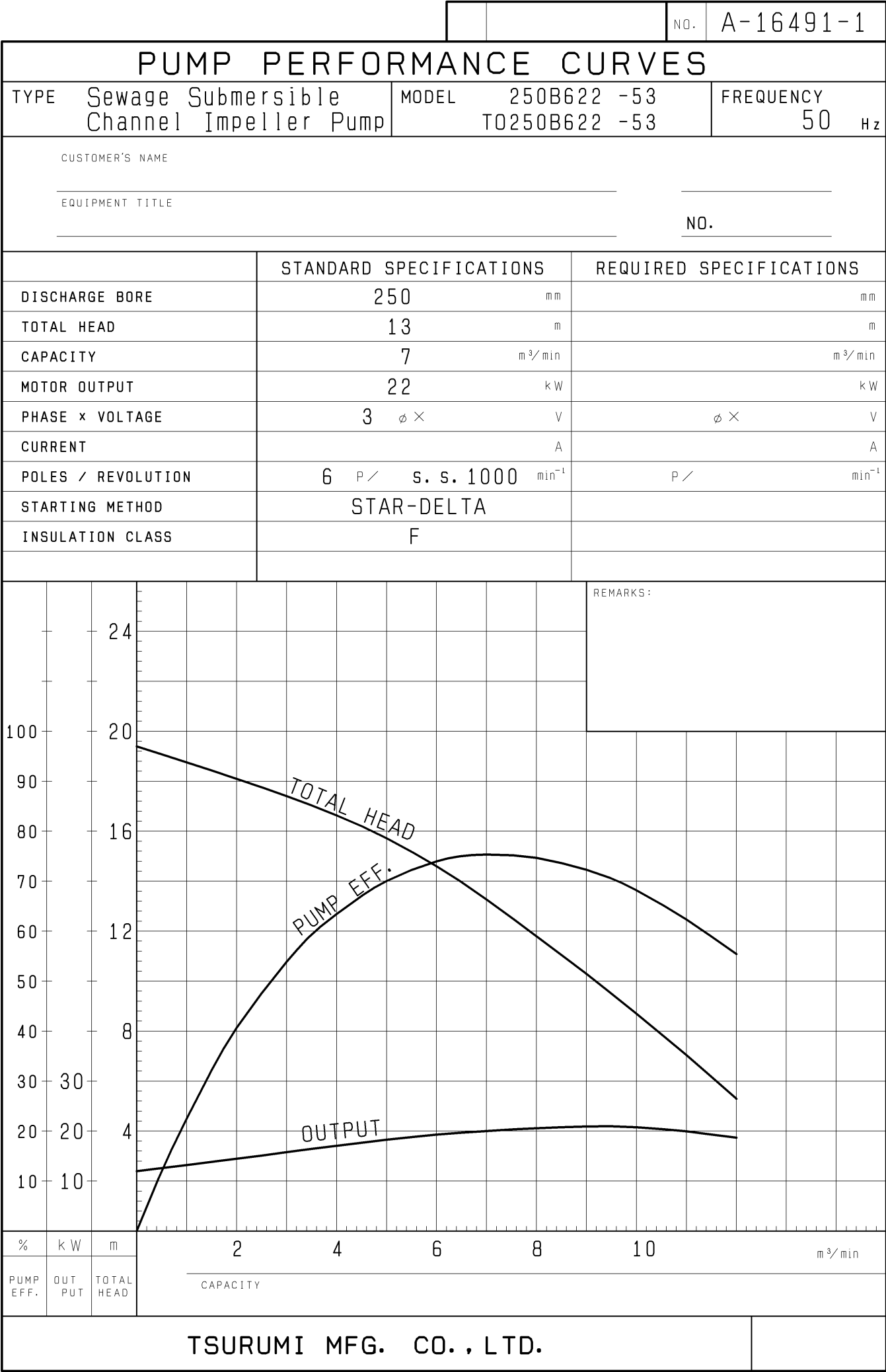


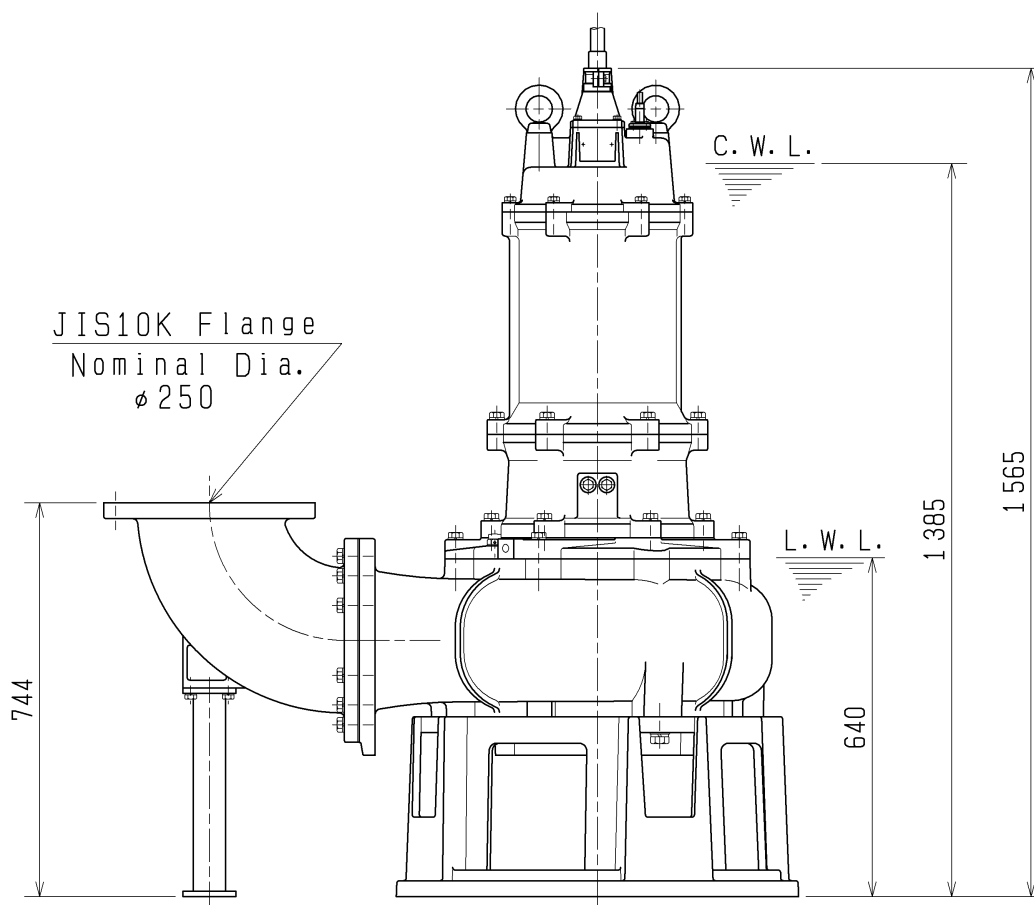
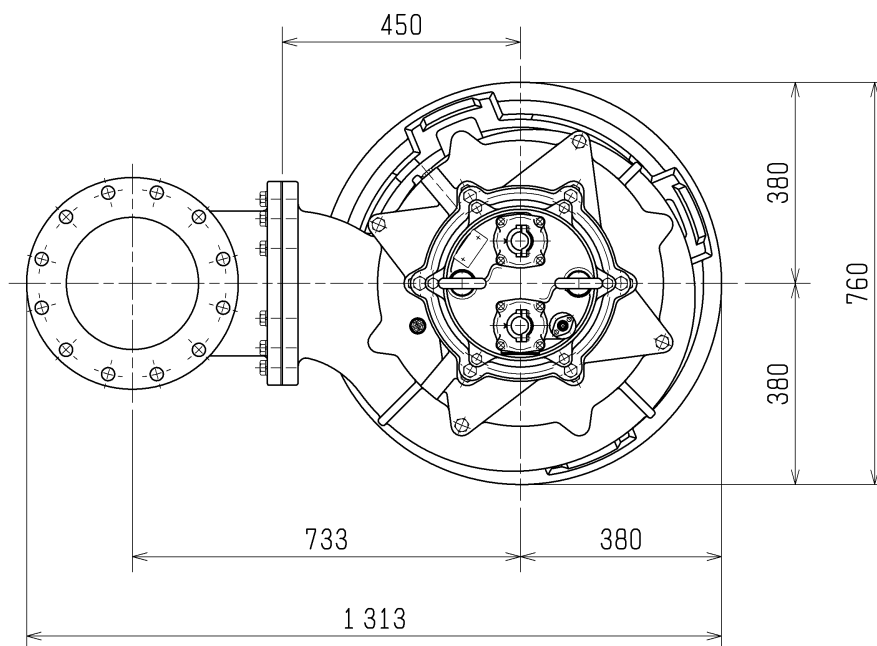
SPECIFICATIONS	Model	250B622	B-series
			22kW, 3-phase
Type of Pump Submersible cast iron pump suitable for pumping sewage, wastewater, storm water, etc.		Impeller Shrouded two-channel impeller for solid-handling design, dynamically balanced	
Type of Fluid Sewage, wastewater, and water carrying solid matters		Solids Passage 50Hz – 90 × 90mm 60Hz – 90 × 76mm	
Temperature: 0 to 40°C (High temperature model available on special request)		Cable Entry with Anti-Wicking Block Watertight cable entry with strain-relief device. The anti-wicking block prevents water incursion due to capillary action should the power cable be damaged or the end submerged.	
Discharge Bore 250mm		Bearings Permanently lubricated, deep-groove, double-shielded C3 ball bearings	
Motor Output 22kW		Shaft 420 stainless steel	
Power Supply Three-phase		Shaft Seal (Mechanical Seal) Furnished with a double-face mechanical seal located in oil chamber. Both upper and lower seal faces always run in a clean environment.	
Starting Method Star-Delta		Upper Seal Faces: SiC + SiC Lower Seal Faces: SiC + SiC	
Motor Continuous-duty rated, dry-type induction motor		Oil Seal (Lip Seal) Used as a “Dust Seal”, it protects the mechanical seal from abrasive particles.	
Insulation Class: F Degree of Protection: IP68		OIL LIFTER (Patented) Equipped in oil chamber. It forcibly supplies lubricating oil to the mechanical seal and continues to supply the oil to the upper seal faces even if lubricant falls below the rated volume.	
No. of Poles & Speed (Synchronous Speed) 6-pole, 1000/1200min ⁻¹ (50/60Hz)		Type of Lubricating Oil & Volume Turbine Oil (ISO VG32), 9500ml	
Power Supply Voltages & Rated Currents 50Hz 60Hz 380V – 49.8A 220V – 85.5A 400V – 49.1A 380V – 47.5A 415V – 49.5A 440V – 42.8A		Motor Protection Device A miniature thermal protector is embedded in each winding of the motor. Should excessive heat builds up, the bimetal strip opens to cause the control panel to shut the power supply.	
Power Cable Sheath: Chloroprene rubber Standard Length: 10m 200 to 600V supply: 1 × 4 × 14mm ² , O.D. 21.7mm 1 × 3 × 14mm ² , O.D. 19.7mm 1 × 4 × 1.25mm ² , O.D. 11.1mm		Leakage Sensor Made of 304 stainless steel. It can be wired to a control panel to alert operators of water incursion into the oil chamber.	
Dry Weight (excluding cable) Free Standing Type: 665kg Guide Rail Fitting Type: 560kg			
TSURUMI MANUFACTURING CO., LTD.			



D I M E N S I O N D R A W I N G		No.		No.	A-19292-1
TYPE	Sewage Submersible Channel Impeller Pump	MODEL	250B622 -54/64		

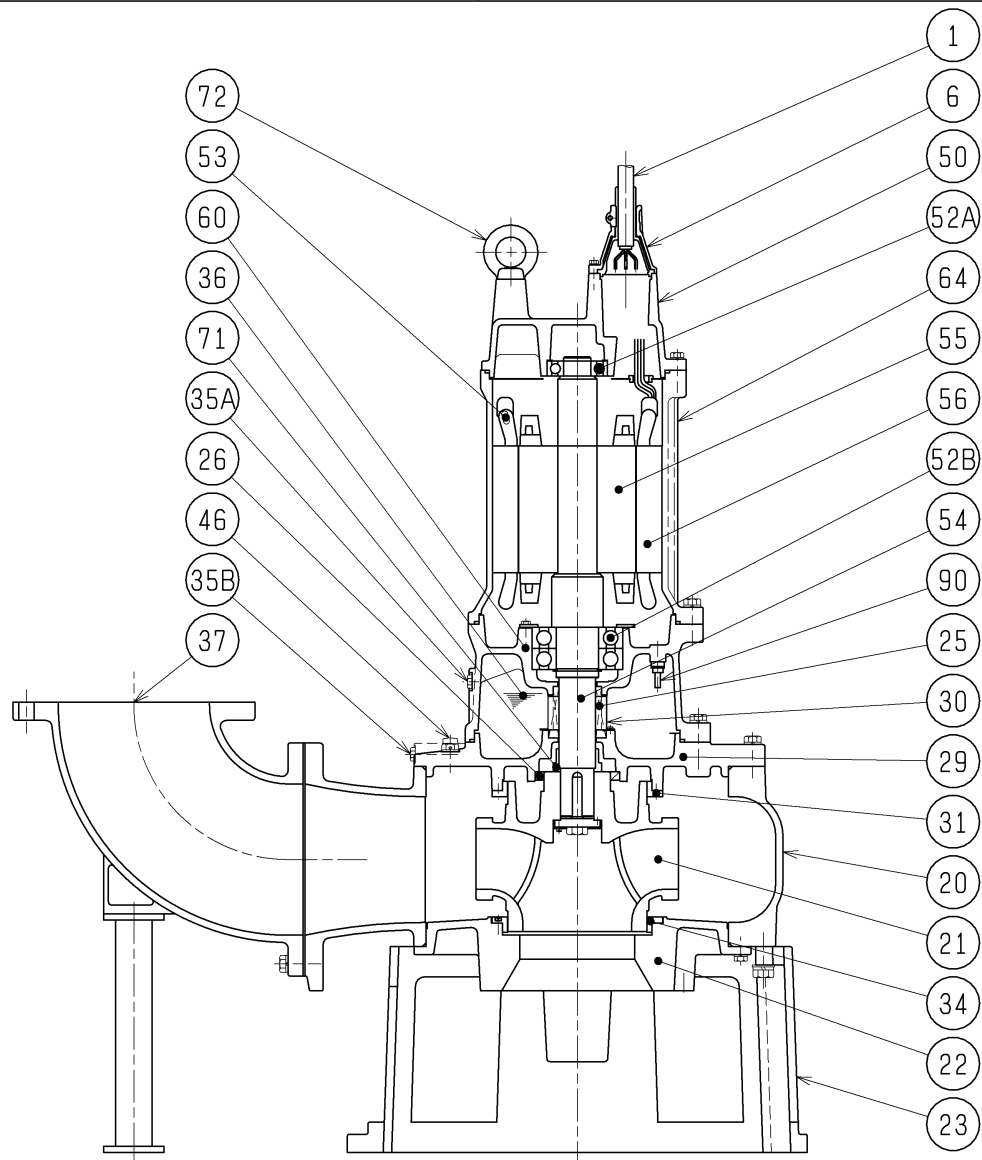
Approximate Weight (※)
665kg

※excluding cable



C.W.L. :Continuous running Water Level
L.W.L. :Lowest running Water Level

SECTIONAL DRAWING			No.		No.	A-19314-1
TYPE	Sewage Submersible Channel Impeller Pump		MODEL	250B622 -54/64		



REQ. SPECIFICATION

No.	DESCRIPTION	Q'TY	MATERIAL / NOTE	No.	DESCRIPTION	Q'TY	MATERIAL / NOTE
1	Cabtyre Cable	2	Chloroprene Sheath (For the Power)	37	Discharge Bend	1	Gray Iron Casting
		1	PVC Sheath (For the Control)	46	Air Release Valve	1	Nylon
6	Stuffing Box	2	Gray Iron Casting	50	Motor Bracket	1	Gray Iron Casting
20	Pump Casing	1	Gray Iron Casting	52A	Upper Bearing	1	6309ZC3
21	Impeller	1	Gray Iron Casting	52B	Lower Bearing	1	6314ZZD2C3
22	Suction Cover	1	Gray Iron Casting	53	Motor Protector	3	
23	Strainer Stand	1	Ductile Iron Casting	54	Shaft	1	Stainless Steel 420J2
25	Mechanical Seal	1	H-60	55	Rotor	1	
26	Oil Seal	1	TC11014014	56	Stator	1	
29	Oil Casing	1	Gray Iron Casting	60	Bearing Housing	1	Gray Iron Casting
30	Oil Lifter	1	Steel Plate	64	Motor Frame	1	Gray Iron Casting
31	Wear Ring	1	Gray Iron Casting	71	Shaft Sleeve	1	Stainless Steel 304
34	Mouth Ring	1	Gray Iron Casting	72	Eye Bolt	2	Structure Steel
35A	Oil Plug	2	Stainless Steel 304	90	Leakage Sensor (Electrode)	1	Stainless Steel
35B	Oil Plug	1	Stainless Steel 304				
36	Lubricant		Turbine Oil (ISO VG32)				