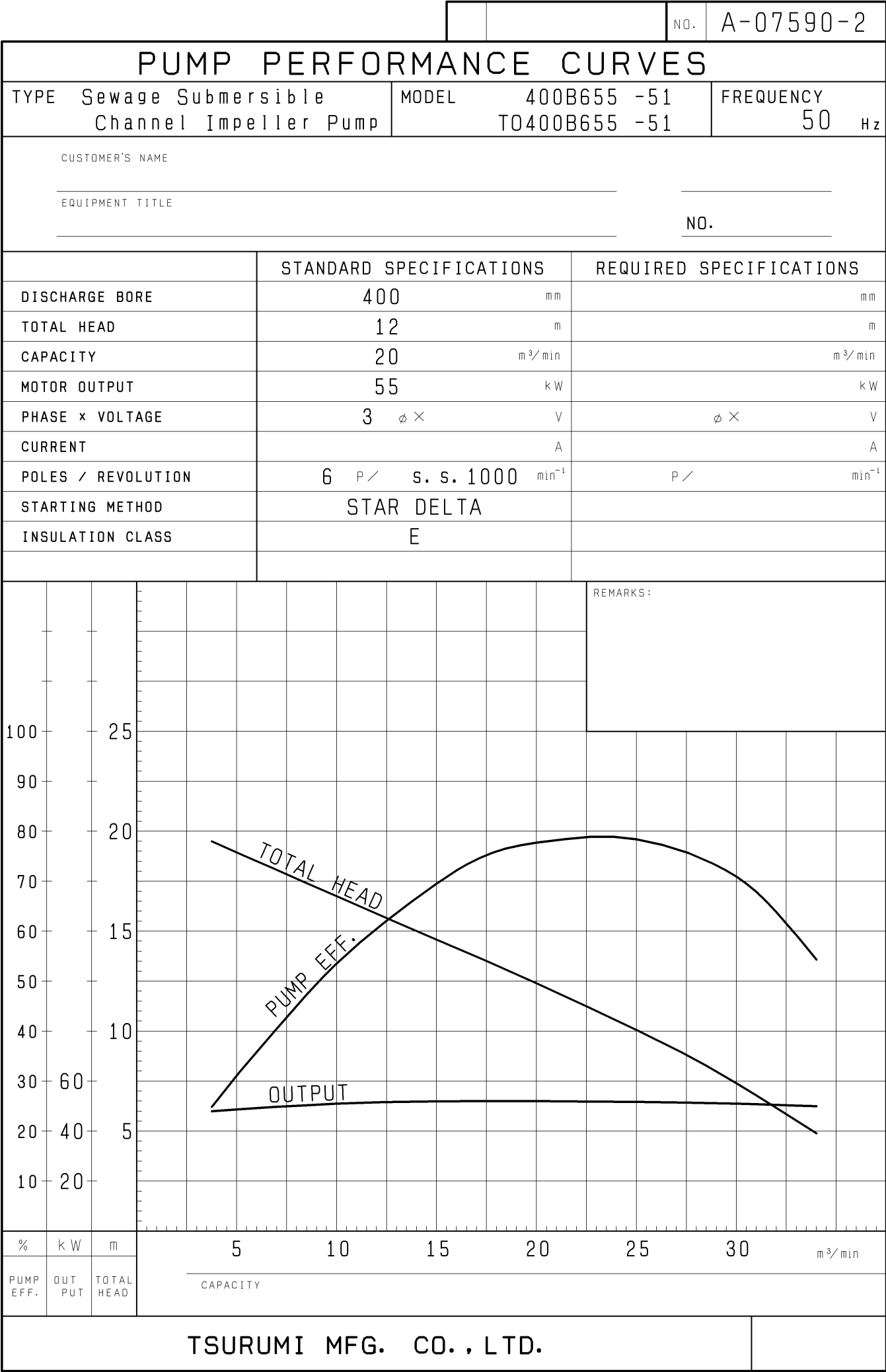


SPECIFICATIONS	Model	400B655	B-series
			55kW, 3-phase
Type of Pump Submersible cast iron pump suitable for pumping sewage, wastewater, storm water, etc.		Impeller Shrouded two-channel impeller for solid-handling design, dynamically balanced	
Type of Fluid Sewage, wastewater, and water carrying solid matters		Solids Passage 50Hz – 145 × 110mm 60Hz – 175 × 100mm	
Temperature: 0 to 40°C (High temperature model available on special request)		Cable Entry with Anti-Wicking Block Watertight cable entry with strain-relief device. The anti-wicking block prevents water incursion due to capillary action should the power cable be damaged or the end submerged.	
Discharge Bore 400mm		Bearings Permanently lubricated, deep-groove, double-shielded C3 ball bearings	
Motor Output 55kW		Shaft 420 stainless steel	
Power Supply Three-phase		Shaft Seal (Mechanical Seal) Furnished with a double-face mechanical seal located in oil chamber. Both upper and lower seal faces always run in a clean environment.	
Starting Method Star-Delta		Upper Seal Faces: SiC + SiC Lower Seal Faces: SiC + SiC	
Motor Continuous-duty rated, dry-type induction motor		Oil Seal (Lip Seal) Used as a “Dust Seal”, it protects the mechanical seal from abrasive particles.	
Insulation Class: E (available in F on special request) Degree of Protection: IP68		Pressure Relief Port Protects the mechanical seal from over rated limits, and also protects the seal faces from abrasive particles by drawing particles away.	
No. of Poles & Speed (Synchronous Speed) 6-pole, 1000/1200min ⁻¹ (50/60Hz)		OIL LIFTER (Patented) Equipped in oil chamber. It forcibly supplies lubricating oil to the mechanical seal and continues to supply the oil to the upper seal faces even if lubricant falls below the rated volume.	
Power Supply Voltages & Rated Currents 50Hz 60Hz 380V – 116A 380V – 113A 400V – 109A 440V – 97A 415V – 107A		Type of Lubricating Oil & Volume Turbine Oil (ISO VG32), 13000ml	
Power Cable Sheath: Chloroprene rubber Standard Length: 10m 200 to 600V supply: $1 \times \begin{pmatrix} 3 \times 38\text{mm}^2 \\ 1 \times 22\text{mm}^2 \\ 3 \times 2\text{mm}^2 \end{pmatrix}$ O.D. 35.8mm $1 \times 3 \times 38\text{mm}^2$, O.D. 35.9mm		Motor Protection Device A miniature thermal protector is embedded in each winding of the motor. Should excessive heat builds up, the bimetal strip opens to cause the control panel to shut the power supply.	
Dry Weight (excluding cable) Free Standing Type: 1750kg Guide Rail Fitting Type: 1700kg		Leakage Sensor Made of 304 stainless steel. It can be wired to a control panel to alert operators of water incursion into the oil chamber.	

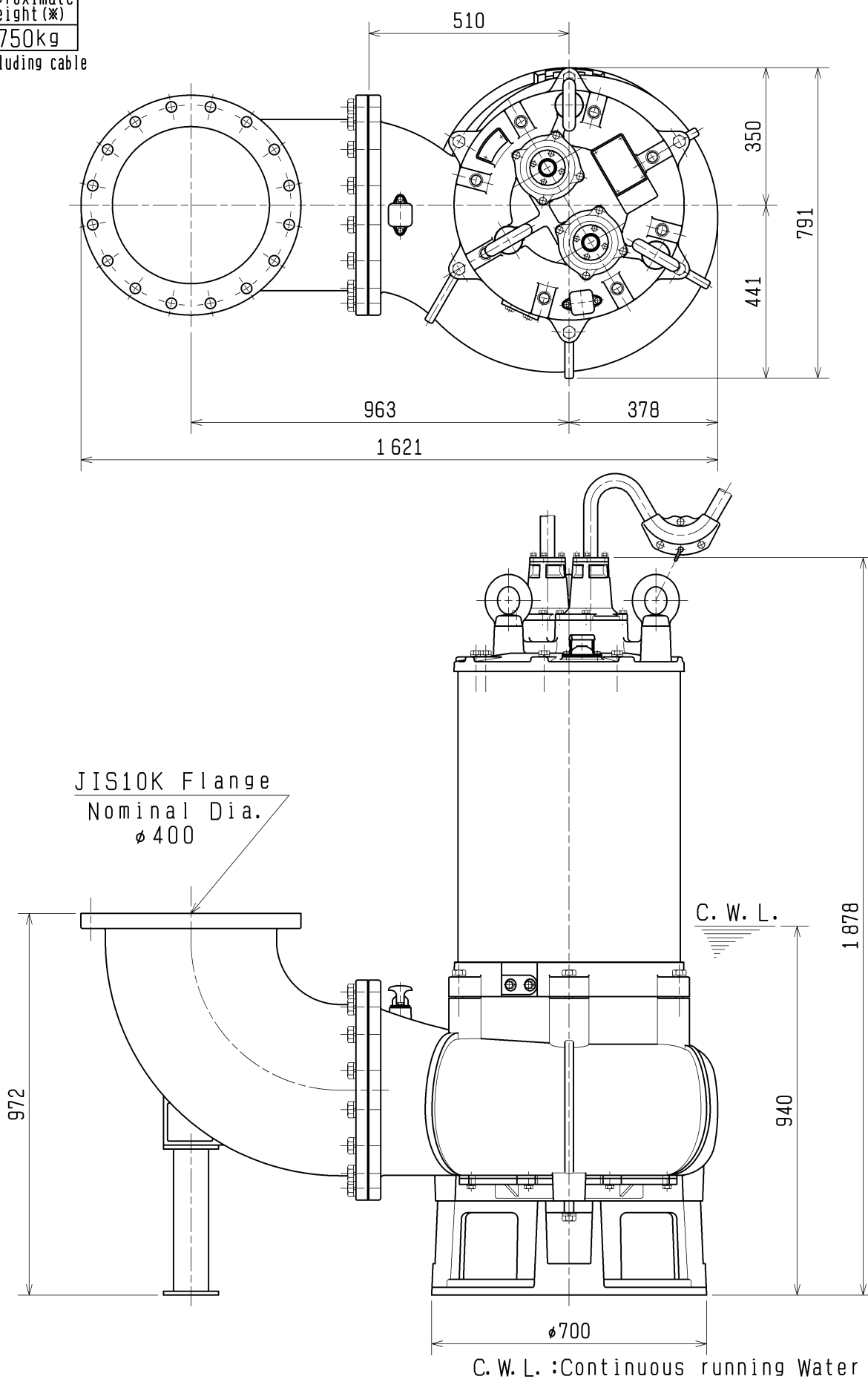
TSURUMI MANUFACTURING CO., LTD.



DIMENSION DRAWING		No.		No.	A-07651-3
TYPE Sewage Submersible Channel Impeller Pump		MODEL 400B655 -51/61			

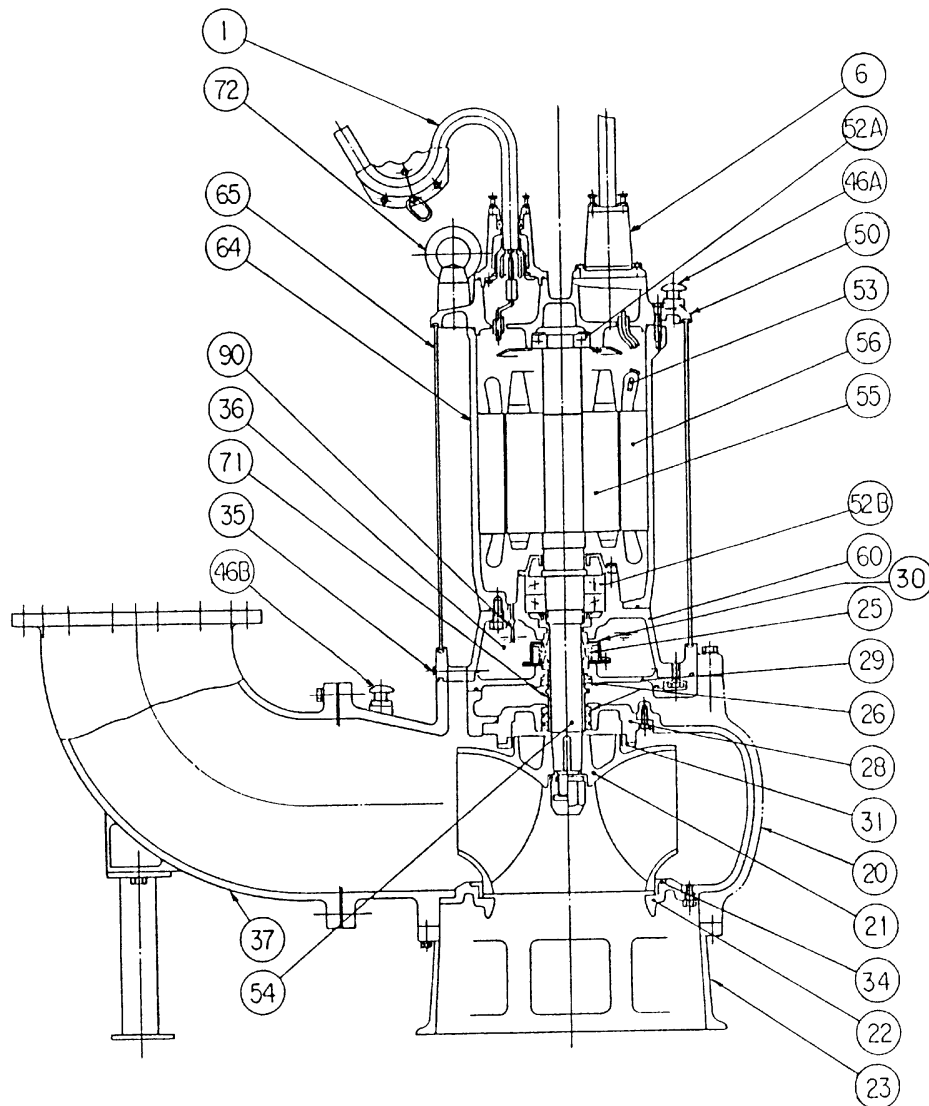
Approximate Weight (※)
1750kg

*excluding cable



C. W. L. :Continuous running Water Level

SECTIONAL DRAWING		No.	No.	A-07691-6
TYPE	Sewage Submersible Channel Impeller Pump	MODEL	400B655 -51/61	



REQ. SPECIFICATION

No.	DESCRIPTION	QTY	MATERIAL / NOTE	No.	DESCRIPTION	QTY	MATERIAL / NOTE
1	Cable	2	Chloroprene Sheath	46B	Air Release Valve	1	Steel Sheet
6	Stuffing Box	2	Gray Iron Casting	50	Motor Bracket	1	Gray Iron Casting
20	Pump Casing	1	Gray Iron Casting	52A	Upper Bearing	1	6313ZZC3
21	Impeller	1	Gray Iron Casting	52B	Lower Bearing	1	7318ADB
22	Suction Cover	1	Gray Iron Casting	53	Motor Protector	3	
23	Strainer Stand	1	Ductile Iron Casting	54	Shaft	1	Stainless Steel 420J2
25	Mechanical Seal	1	H-70	55	Rotor	1	
26	Oil Seal	4	TC-8011515	56	Stator	1	
28	Seal Housing	1	Gray Iron Casting	60	Bearing Housing	1	Gray Iron Casting
29	Oil Casing	1	Gray Iron Casting	64	Motor Frame	1	Gray Iron Casting
30	Oil Lifter	1	Steel Sheet	65	Outer Cover	1	Structure Steel
31	Wear Ring	1	Gray Iron Casting	71	Shaft Sleeve	1	Stainless Steel 403
34	Mouse Ring	1	Gray Iron Casting	72	Eyebolt	3	Structure Steel
35	Oil Plug	2	Stainless Steel 304	90	Leakage Sensor (Electrode)	1	Stainless Steel
36	Lubricant		Turbine Oil (ISO VG32)				
37	Discharge Bend	1	Gray Iron Casting				
46A	Air Release Valve	1	Steel Sheet				