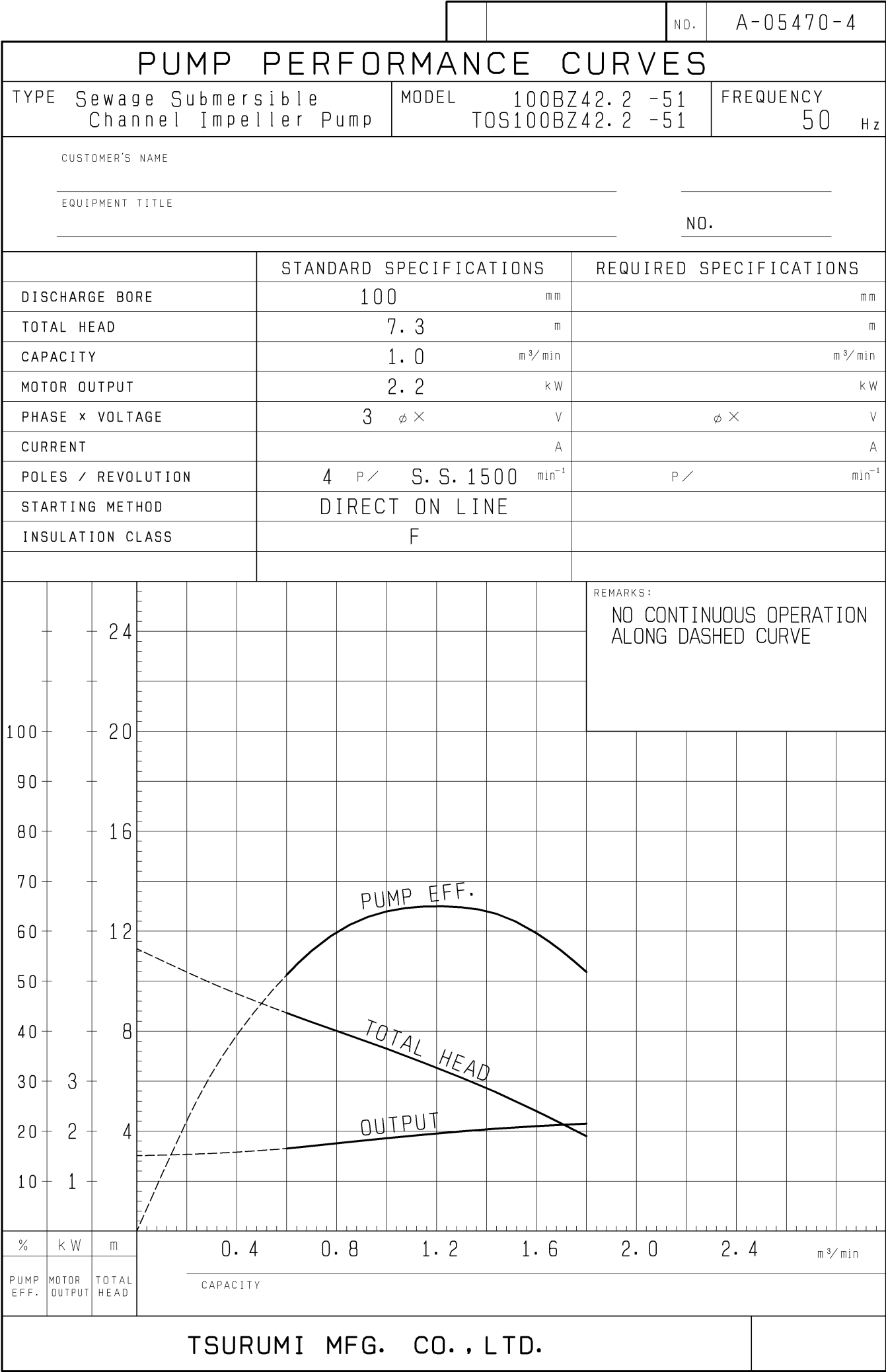
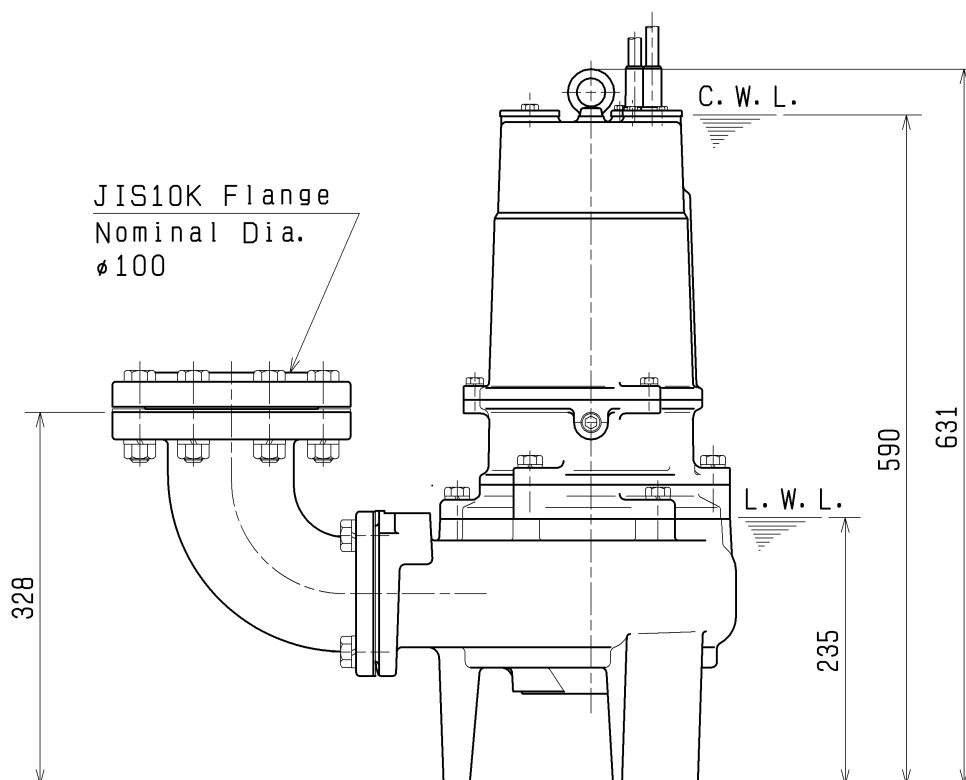
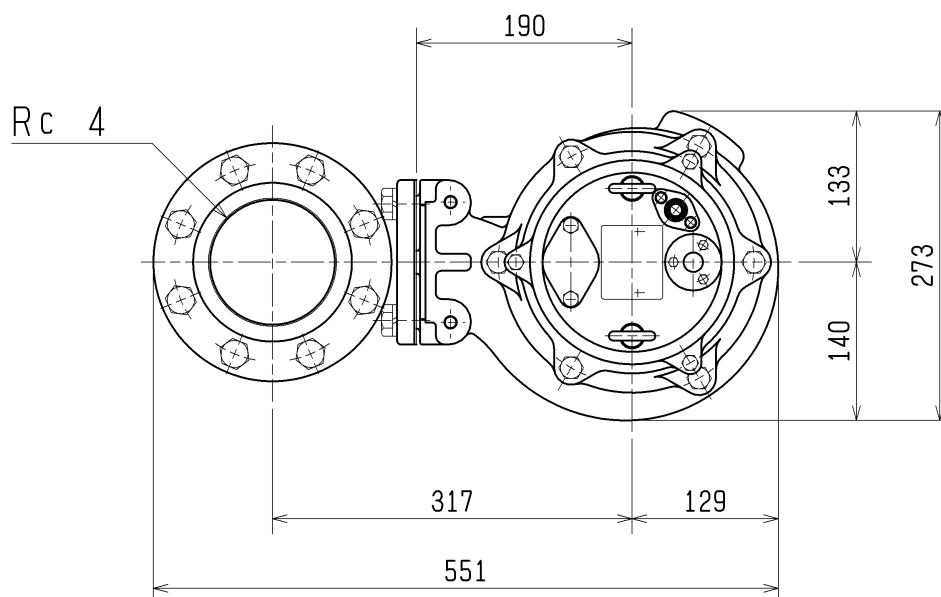


SPECIFICATIONS	Model	100BZ42.2	BZ-series								
			2.2kW, 3-phase								
<p>Type of Pump Submersible cast iron pump suitable for pumping sewage, wastewater, storm water, etc.</p> <p>Type of Fluid Sewage, wastewater, and water carrying solid matters</p> <p>Temperature: 0 to 40°C (High temperature model available on special request)</p> <p>Discharge Bore 100mm</p> <p>Motor Output 2.2kW</p> <p>Power Supply Three-phase</p> <p>Starting Method Direct on Line</p> <p>Motor Continuous-duty rated, dry-type induction motor</p> <p>Insulation Class: F Degree of Protection: IP68</p> <p>No. of Poles & Speed (Synchronous Speed) 4-pole, 1500/1800min⁻¹ (50/60Hz)</p> <p>Power Supply Voltages & Rated Currents</p> <table><tr><td>50Hz</td><td>60Hz</td></tr><tr><td>380V – 5.7A</td><td>220V – 9.4A</td></tr><tr><td>400V – 5.3A</td><td>380V – 5.2A</td></tr><tr><td>415V – 5.1A</td><td>440V – 4.7A</td></tr></table> <p>Power Cable Sheath: PVC Standard Length: 10m 380 to 600V supply: 1 × 4 × 1.25mm², O.D. 11.1mm 1 × 4 × 1.25mm², O.D. 11.1mm 200 to 240V supply: 1 × 4 × 2.0mm², O.D. 11.8mm 1 × 4 × 1.25mm², O.D. 11.1mm</p> <p>Dry Weight (excluding cable) Free Standing Type: 78kg Guide Rail Fitting Type: 74kg</p>		50Hz	60Hz	380V – 5.7A	220V – 9.4A	400V – 5.3A	380V – 5.2A	415V – 5.1A	440V – 4.7A	<p>Impeller Shrouded single-channel impeller for solid-handling design, dynamically balanced</p> <p>Solids Passage 50Hz – ϕ80mm 60Hz – ϕ80mm</p> <p>Cable Entry with Anti-Wicking Block Watertight cable entry with strain-relief device. The anti-wicking block prevents water incursion due to capillary action should the power cable be damaged or the end submerged.</p> <p>Bearings Permanently lubricated, deep-groove, double-shielded C3 ball bearings</p> <p>Shaft 420 stainless steel</p> <p>Shaft Seal (Mechanical Seal) Furnished with a double-face mechanical seal located in oil chamber. Both upper and lower seal faces always run in a clean environment.</p> <p>Upper Seal Faces: Ceramic + Carbon Lower Seal Faces: SiC + SiC</p> <p>Oil Seal (Lip Seal) Used as a “Dust Seal”, it protects the mechanical seal from abrasive particles.</p> <p>OIL LIFTER (Patented) Equipped in oil chamber. It forcibly supplies lubricating oil to the mechanical seal and continues to supply the oil to the upper seal faces even if lubricant falls below the rated volume.</p> <p>Type of Lubricating Oil & Volume Turbine Oil (ISO VG32), 1300ml</p> <p>Motor Protection Device A miniature thermal protector is embedded in each winding of the motor. Should excessive heat builds up, the bimetal strip opens to cause the control panel to shut the power supply.</p>	
50Hz	60Hz										
380V – 5.7A	220V – 9.4A										
400V – 5.3A	380V – 5.2A										
415V – 5.1A	440V – 4.7A										
<p>Optional Accessories</p> <p>Bend Set (Free Standing Type)</p> <ul style="list-style-type: none">• Discharge Bend• JIS 10kg/cm² Screwed Flange <p>TOS/TS Set (Guide Rail Fitting Type)</p> <ul style="list-style-type: none">• Duckfoot Bend• Guide Support• Guide Hook• Lifting Chain 5m (with Shackles)• JIS 10kg/cm² Screwed Flange (TOS Set only)		<p>External Leakage Sensor</p>									
TSURUMI MANUFACTURING CO., LTD.											

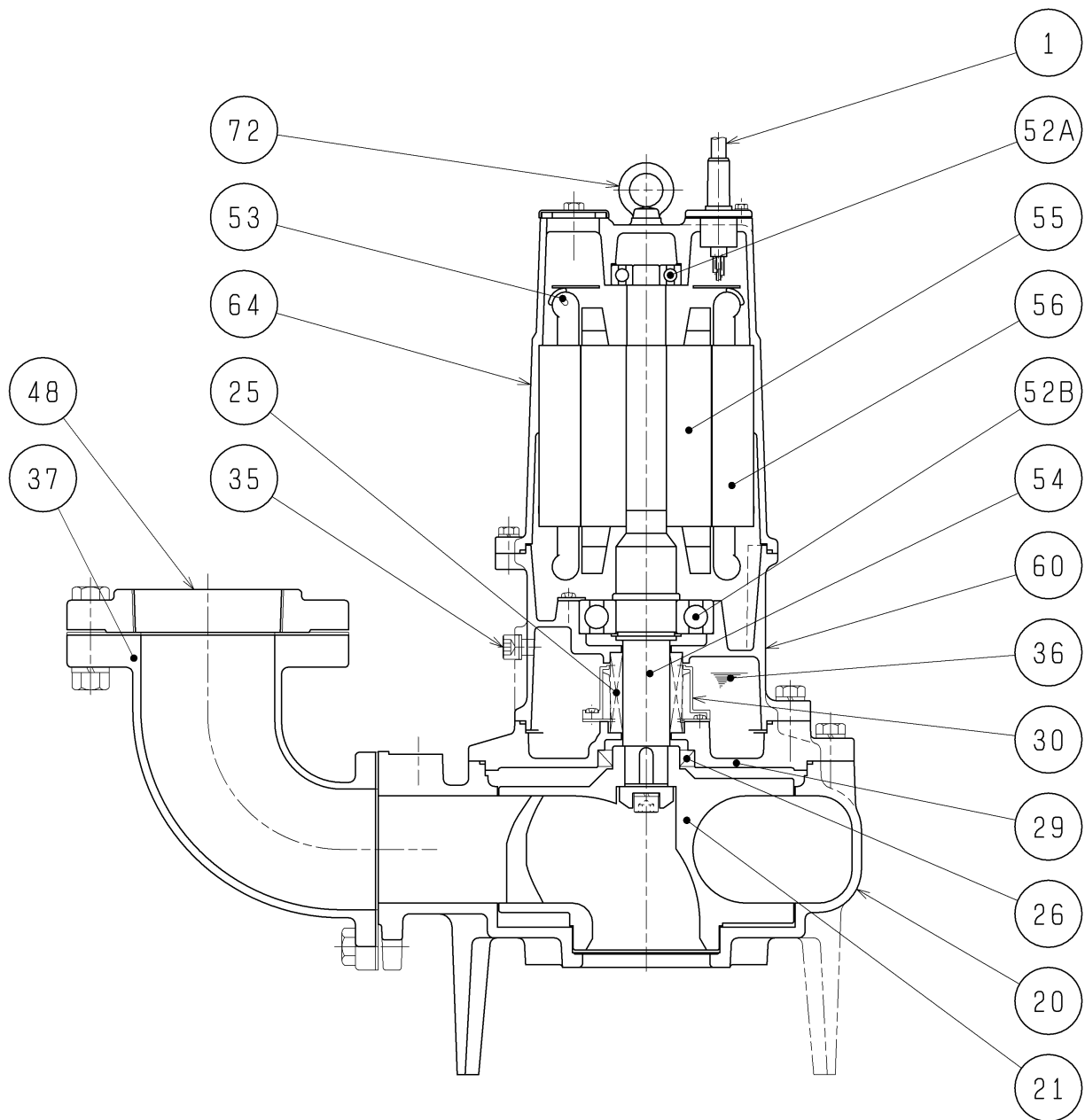


DIMENSION DRAWING		No.	No.
TYPE	Submersible Channel Impeller Sewage Pump	MODEL	100BZ42. 2-51/61



C.W.L.:Continuous running Water Level
L.W.L.:Lowest running Water Level

SECTIONAL DRAWING			No.		No.	A-05497-4
TYPE	Sewage Submersible Channel Impeller Pump		MODEL	80BZ41.5	-51/61	
				100BZ42.2	-51/61	
				100BZ43.7	-51/61	



	1.5kW	2.2kW	3.7kW
※1	H-30A	H-30A	H-35A
※2	TC456812	TC456812	TC507212
※3	6307ZZC3	6307ZZC3	6309ZZC3
※4	For the Power and For the Control		

※5 the wetted part

REQ. SPECIFICATIONS

No.	DESCRIPTION	Q'TY	MATERIAL / NOTE	No.	DESCRIPTION	Q'TY	MATERIAL / NOTE
1	Cabtyre Cable	2	PVC Sheath ※4	52A	Upper Bearing	1	6304ZZC3
20	Pump Casing	1	Gray Iron Casting	52B	Lower Bearing	1	※3
21	Impeller	1	Gray Iron Casting	53	Motor Protector	3	
25	Mechanical Seal	1	※1	54	Shaft	1	Stainless Steel 420J2(※5)
26	Oil Seal	1	※2	55	Rotor	1	
29	Oil Casing	1	Gray Iron Casting	56	Stator	1	
30	Oil Lifter	1	Plastic	60	Bearing Housing	1	Gray Iron Casting
35	Oil Plug	1	Stainless Steel 304	64	Motor Frame	1	Gray Iron Casting
36	Lubricant		Turbine Oil (ISO VG32)	72	Eyebolts	2	Stainless Steel 304
37	Discharge Bend	1	Gray Iron Casting				
48	Screwed Flange	1	Gray Iron Casting				