

SPECIFICATIONS	Model	40PU2.15	
		PU-series 0.15kW, 3-phase	

**Type of Pump**

Submersible vortex pump made of 304 stainless steel and resin suitable for pumping sewage, wastewater, storm water, etc.

**Type of Fluid**

Sewage, wastewater, and water carrying solid matters

Temperature: 0 to 40°C

**Discharge Bore**

40mm

**Motor Output**

0.15kW

**Power Supply**

Three-phase

**Starting Method**

Direct on Line

**Motor**

Continuous-duty rated, dry-type induction motor

Insulation Class: E

Degree of Protection: IP68

No. of Poles & Speed (Synchronous Speed)

2-pole, 3000/3600min<sup>-1</sup> (50/60Hz)

Power Supply Voltages & Rated Currents

50Hz	60Hz
380V – 0.6A	220V – 1.15A
400V – 0.6A	380V – 0.7 A
415V – 0.6A	440V – 0.6 A

**Power Cable**

Sheath: PVC

Standard Length: 6m

200 to 600V supply:

1 × 4 × 1.25mm<sup>2</sup>, O.D. 11.1mm

**Dry Weight (excluding cable)**

Standard Model: 5.6kg

Auto & Auto-Alternation Model: 6.3kg

**Impeller**

Vortex impeller made of glass-fiber reinforced PPO

Solids Passage

50Hz –  $\phi$ 35mm

60Hz –  $\phi$ 35mm

**Cable Entry with Anti-Wicking Block**

Watertight cable entry with strain-relief device. The anti-wicking block prevents water incursion due to capillary action should the power cable be damaged or the end submerged.

**Bearings**

Permanently lubricated, deep-groove, double-shielded C3 ball bearings

**Shaft**

420 stainless steel

**Shaft Seal (Mechanical Seal)**

Furnished with a double-face mechanical seal located in oil chamber. Both upper and lower seal faces always run in a clean environment.

Upper Seal Faces: Ceramic + Carbon

Lower Seal Faces: SiC + Ceramic

**OIL LIFTER (Patented)**

Equipped in oil chamber. It forcibly supplies lubricating oil to the mechanical seal and continues to supply the oil to the upper seal faces even if lubricant falls below the rated volume.

Type of Lubricating Oil & Volume

Liquid Paraffin (ISO VG32), 150ml

**Motor Protection Device**

A circle thermal protector built in the motor housing. Directly cuts the motor circuit if excessive heat builds up or an overcurrent condition occurs in the motor.

**Optional Accessories**
**TOK Set (Guide Rail Fitting Type)**

- Duckfoot Bend
- Guide Support
- Guide Hook
- Lifting Chain 4m (with Shackles)

NO. A-14246-1

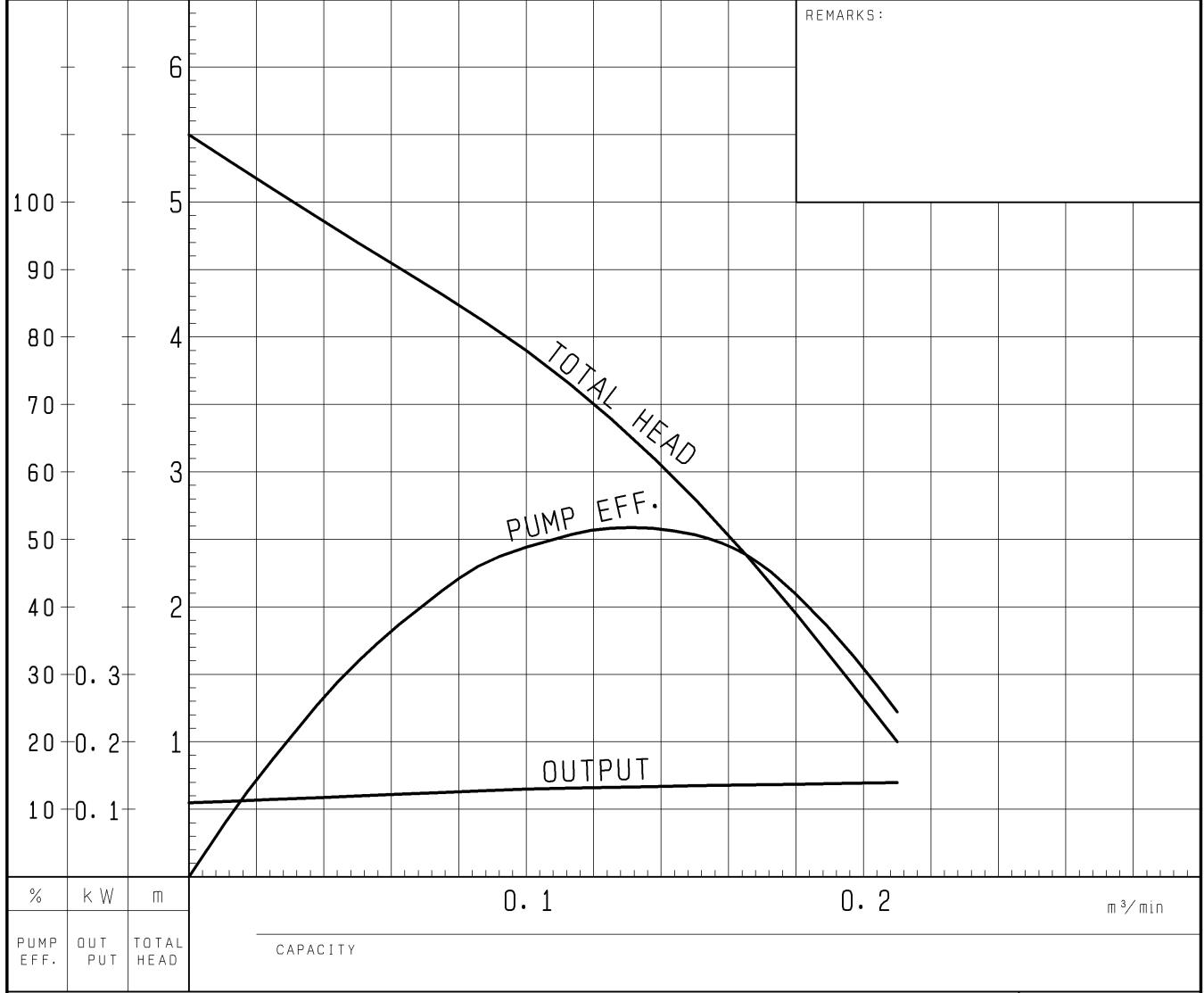
# PUMP PERFORMANCE CURVES

TYPE	Submersible Vortex Sewage Pump	MODEL	40PU (A/W) 2.15 -53	FREQUENCY	50 Hz
------	-----------------------------------	-------	---------------------	-----------	-------

CUSTOMER'S NAME \_\_\_\_\_

EQUIPMENT TITLE \_\_\_\_\_ NO. \_\_\_\_\_

	STANDARD SPECIFICATIONS	REQUIRED SPECIFICATIONS
DISCHARGE BORE	40 mm	mm
TOTAL HEAD	MAX. 5.5 m	m
CAPACITY	MAX. 0.21 m <sup>3</sup> /min	m <sup>3</sup> /min
MOTOR OUTPUT	0.15 kW	kW
PHASE x VOLTAGE	3 $\phi$ x V	$\phi$ x V
CURRENT	A	A
POLES / REVOLUTION	2 P / s. s. 3000 min <sup>-1</sup>	P / min <sup>-1</sup>
STARTING METHOD	DIRECT ON LINE	
INSULATION CLASS	E	

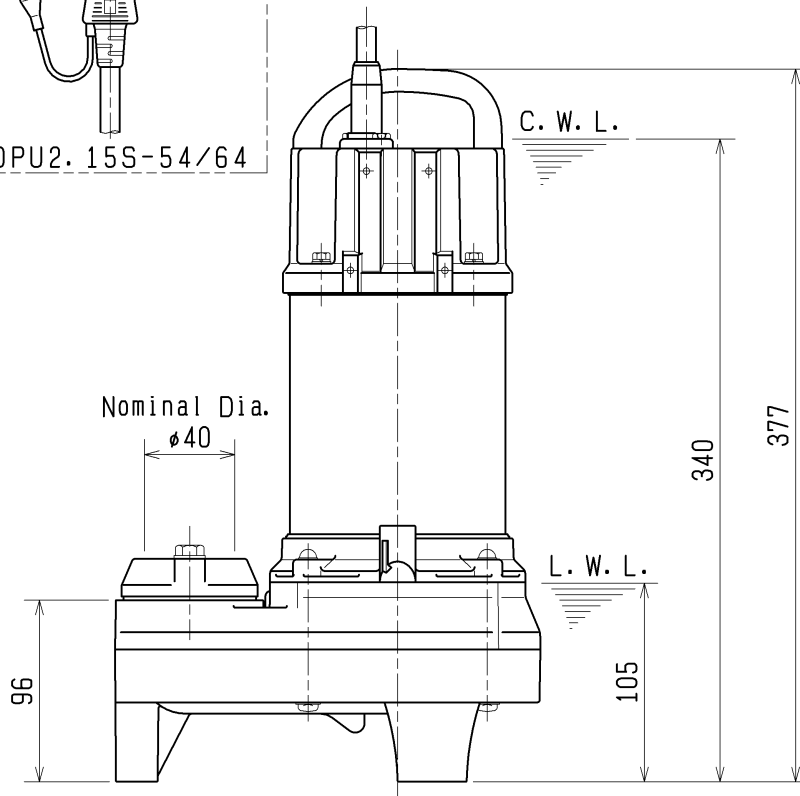
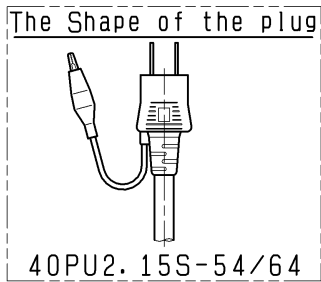
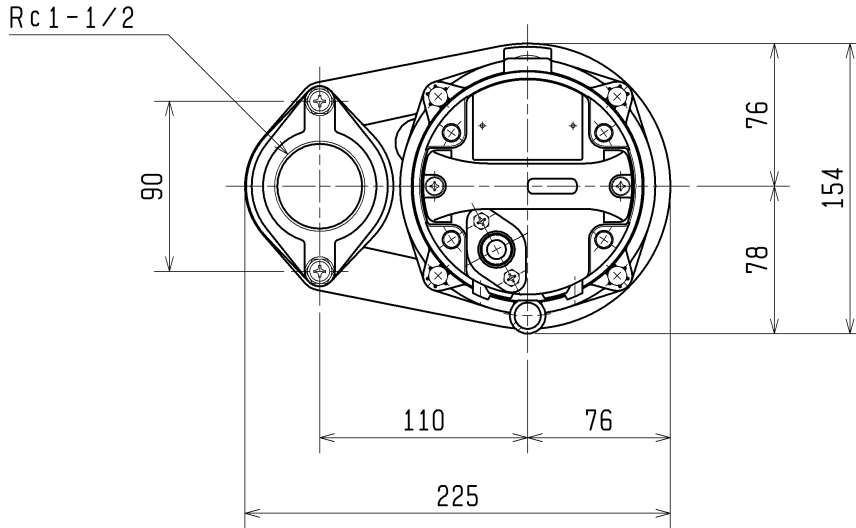


TSURUMI MFG. CO., LTD.

DIMENSION DRAWING		No.	No.	A-19550-2
TYPE	Submersible Vortex Sewage Pump	MODEL	40PU2.15S -54/64 40PU2.15 -53/63	

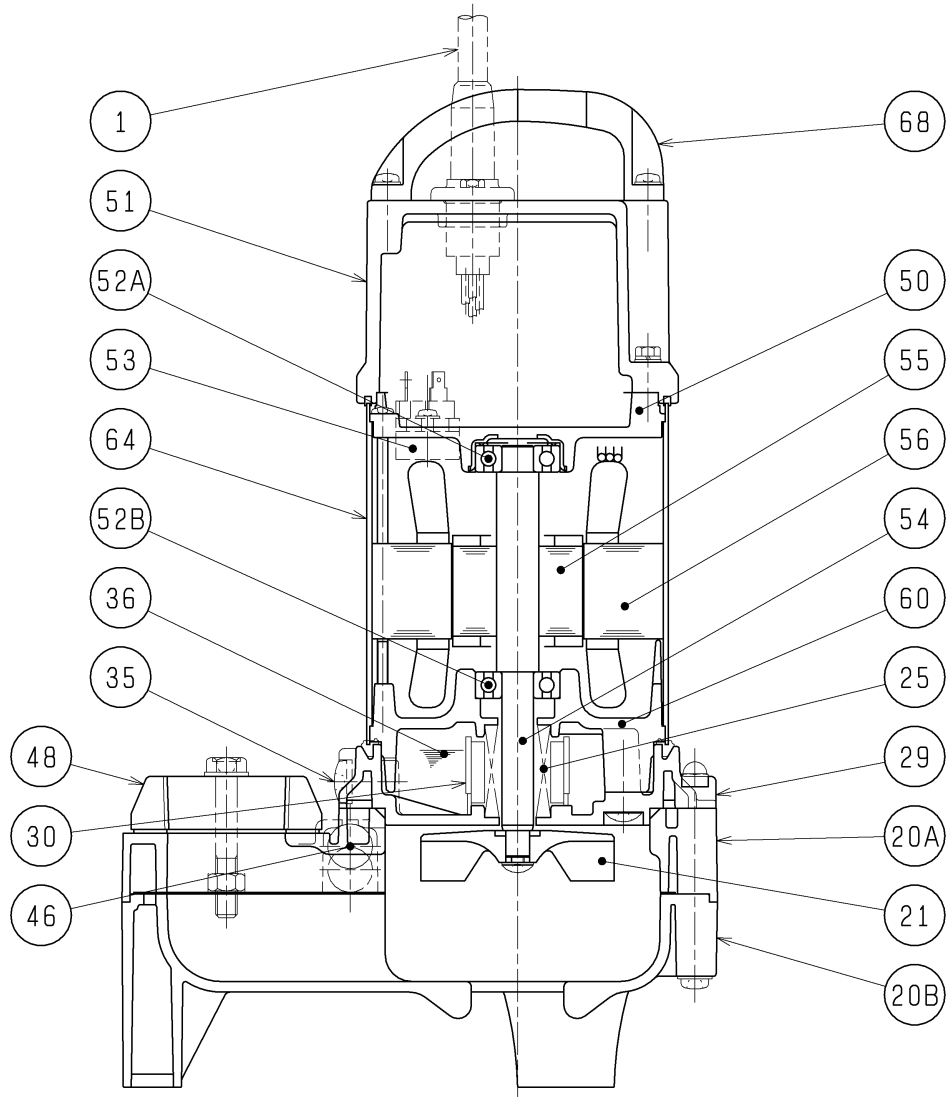
MODEL	Approximate Weight (※)
40PU2.15S-54/64	6.1kg
40PU2.15-53/63	5.6kg

※excluding cable



C.W.L. :Continuous running Water Level  
L.W.L. :Lowest running Water Level

<b>SECTIONAL DRAWING</b>		No.	No. A-19564-1
TYPE	Submersible Vortex Sewage Pump	MODEL	40PU2.15 -53/63



REQ. SPECIFICATION	

No.	DESCRIPTION	Q'TY	MATERIAL / NOTE	No.	DESCRIPTION	Q'TY	MATERIAL / NOTE
1	Cable	1	PVC Sheath	51	Head Cover	1	Plastic W/GF
20A	Casing-upper Half	1	Plastic W/GF	52A	Upper Bearing	1	6201ZZC3
20B	Casing-lower Half	1	Plastic	52B	Lower Bearing	1	6201ZZC3
21	Impeller	1	Plastic W/GF	53	Motor Protector	1	
25	Mechanical Seal	1	D-12RC	54	Shaft	1	Stainless Steel 420J2
29	Oil Casing	1	Plastic W/GF	55	Rotor	1	
30	Oil Lifter	1	Plastic	56	Stator Complete	1	
35	Oil Plug	1	Stainless Steel 304	60	Bearing Housing	1	Aluminium Die Casting
36	Lubricant		Liquid Paraffin (ISO VG32)	64	Motor Frame	1	Stainless Steel 304
46	Air Release Valve	1	Glass Ball	68	Handle	1	Plastic
48	Screwed Flange	1	Plastic				
50	Motor Bracket	1	Aluminium Die Casting				