

SPECIFICATIONS	Model	80BZ41.5	BZ-series
			1.5kW, 3-phase
Type of Pump Submersible cast iron pump suitable for pumping sewage, wastewater, storm water, etc.	Impeller Shrouded single-channel impeller for solid-handling design, dynamically balanced		
Type of Fluid Sewage, wastewater, and water carrying solid matters	Solids Passage 50Hz – ϕ80mm 60Hz – ϕ80mm		
Temperature: 0 to 40°C (High temperature model available on special request)	Cable Entry with Anti-Wicking Block Watertight cable entry with strain-relief device. The anti-wicking block prevents water incursion due to capillary action should the power cable be damaged or the end submerged.		
Discharge Bore 80mm	Bearings Permanently lubricated, deep-groove, double-shielded C3 ball bearings		
Motor Output 1.5kW	Shaft 420 stainless steel		
Power Supply Three-phase	Shaft Seal (Mechanical Seal) Furnished with a double-face mechanical seal located in oil chamber. Both upper and lower seal faces always run in a clean environment.		
Starting Method Direct on Line	Upper Seal Faces: Ceramic + Carbon Lower Seal Faces: SiC + SiC		
Motor Continuous-duty rated, dry-type induction motor	Oil Seal (Lip Seal) Used as a “Dust Seal”, it protects the mechanical seal from abrasive particles.		
Insulation Class: F Degree of Protection: IP68	OIL LIFTER (Patented) Equipped in oil chamber. It forcibly supplies lubricating oil to the mechanical seal and continues to supply the oil to the upper seal faces even if lubricant falls below the rated volume.		
No. of Poles & Speed (Synchronous Speed) 4-pole, 1500/1800min ⁻¹ (50/60Hz)	Type of Lubricating Oil & Volume Turbine Oil (ISO VG32), 1300ml		
Power Supply Voltages & Rated Currents 50Hz 60Hz 380V – 4.2A 220V – 8.0A 400V – 4.0A 380V – 4.2A 415V – 4.1A 440V – 4.0A	Motor Protection Device A miniature thermal protector is embedded in each winding of the motor. Should excessive heat builds up, the bimetal strip opens to cause the control panel to shut the power supply.		
Power Cable Sheath: PVC Standard Length: 10m 200 to 600V supply: 1 × 4 × 1.25mm ² , O.D. 11.1mm 1 × 4 × 1.25mm ² , O.D. 11.1mm			
Dry Weight (excluding cable) Free Standing Type: 78kg Guide Rail Fitting Type: 74kg			
Optional Accessories			
Bend Set (Free Standing Type) • Discharge Bend • JIS 10kg/cm ² Screwed Flange	External Leakage Sensor		
TOS/TS Set (Guide Rail Fitting Type) • Duckfoot Bend • Guide Support • Guide Hook • Lifting Chain 5m (with Shackles) • JIS 10kg/cm ² Screwed Flange (TOS Set only)			
TSURUMI MANUFACTURING CO., LTD.			

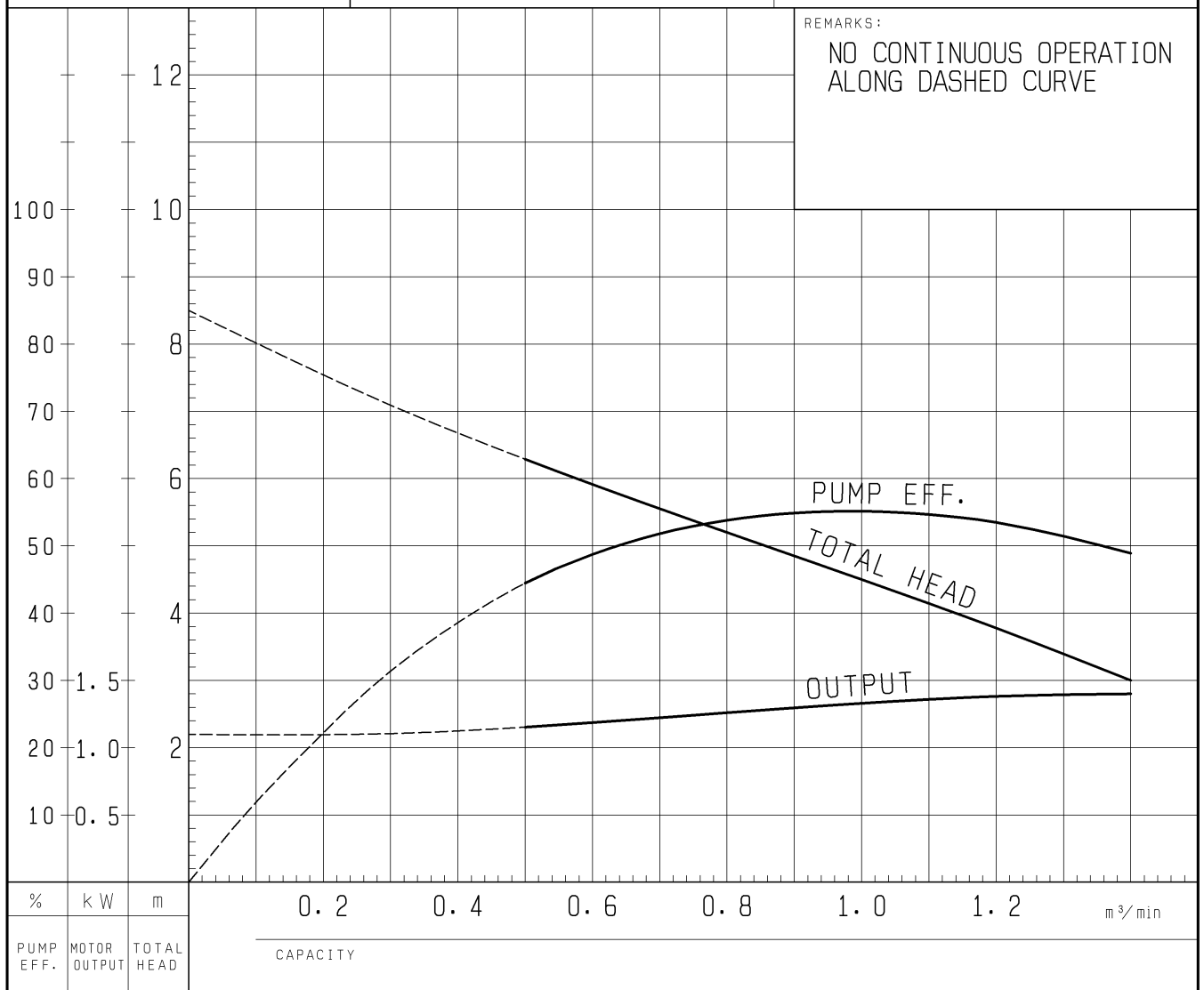
TYPE Sewage Submersible
Channel Impeller Pump

```
MODEL      80BZ41.5  -51
TOS80BZ41.5  -51
```

FREQUENCY
50 Hz

NO.

	STANDARD SPECIFICATIONS	REQUIRED SPECIFICATIONS
DISCHARGE BORE	80 mm	mm
TOTAL HEAD	5.2 m	m
CAPACITY	0.8 m ³ /min	m ³ /min
MOTOR OUTPUT	1.5 kW	kW
PHASE × VOLTAGE	3 ∅ × V	∅ × V
CURRENT	A	A
POLES / REVOLUTION	4 P / S. S. 1500 min ⁻¹	P / min ⁻¹
STARTING METHOD	DIRECT ON LINE	
INSULATION CLASS	F	

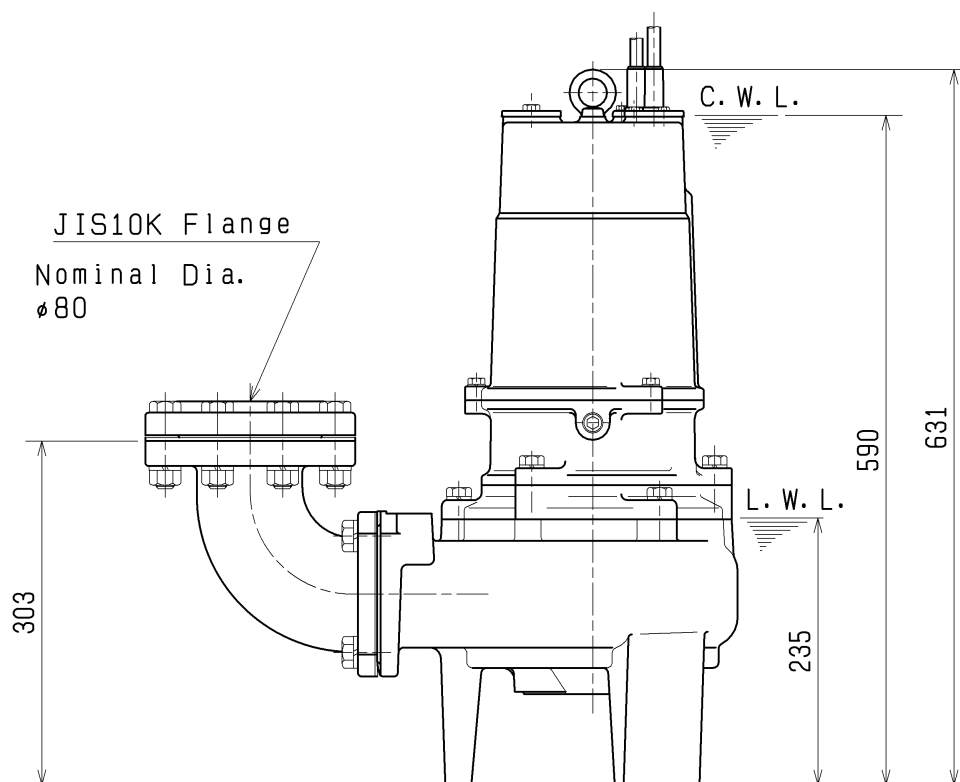
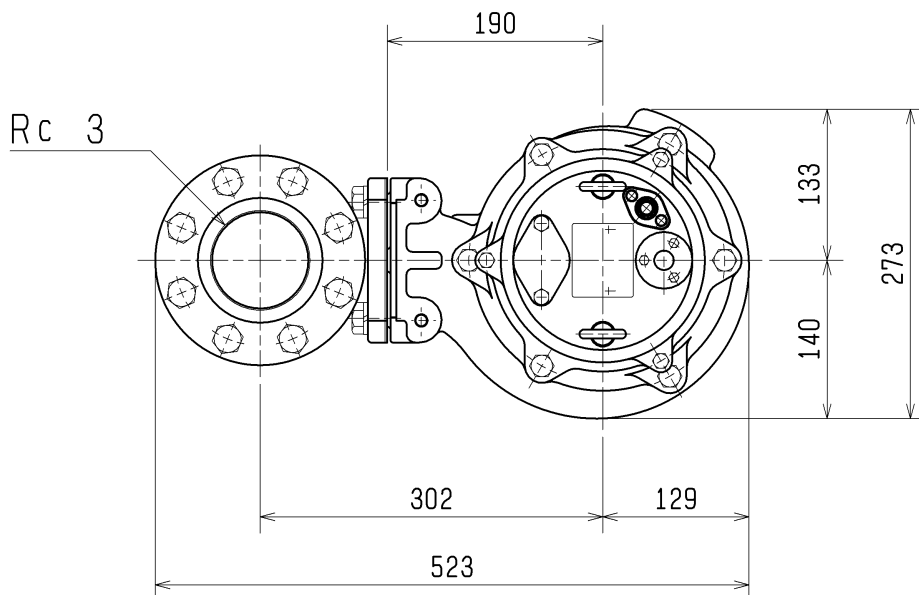


TSURUMI MFG. CO., LTD.

DIMENSION DRAWING			No.		No.	A-05481-4
TYPE	Submersible Channel Impeller Sewage Pump		MODEL	80BZ41.5-51/61		

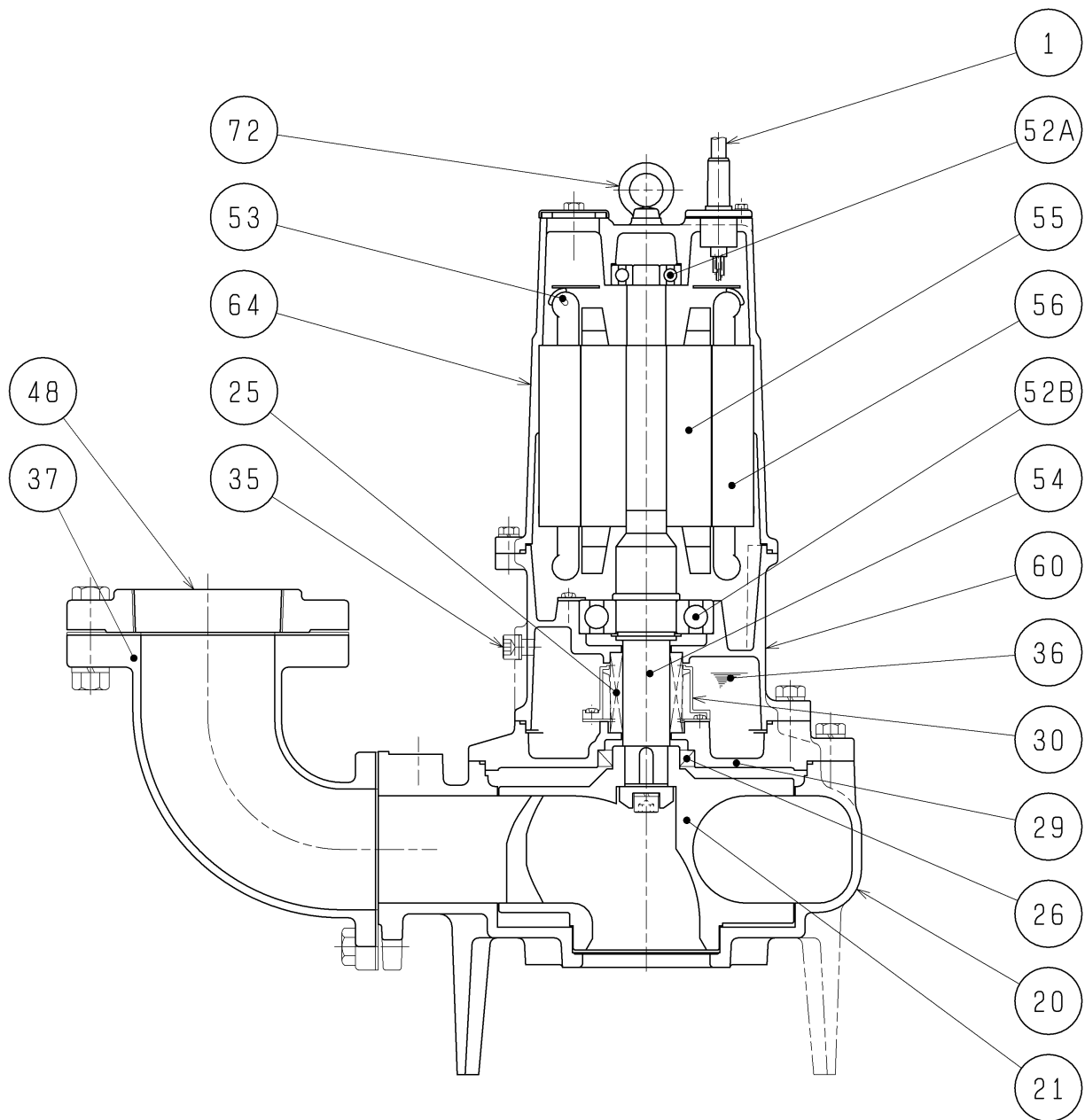
Approximate Weight(※)
78kg

※excluding cable



C. W. L. :Continuous running Water Level
L. W. L. :Lowest running Water Level

SECTIONAL DRAWING			No.		No.	A-05497-4
TYPE	Sewage Submersible Channel Impeller Pump		MODEL	80BZ41.5	-51/61	
				100BZ42.2	-51/61	
				100BZ43.7	-51/61	



	1.5kW	2.2kW	3.7kW
※1	H-30A	H-30A	H-35A
※2	TC456812	TC456812	TC507212
※3	6307ZZC3	6307ZZC3	6309ZZC3
※4	For the Power and For the Control		

※5 the wetted part

REQ. SPECIFICATIONS

No.	DESCRIPTION	Q'TY	MATERIAL / NOTE	No.	DESCRIPTION	Q'TY	MATERIAL / NOTE
1	Cabtyre Cable	2	PVC Sheath ※4	52A	Upper Bearing	1	6304ZZC3
20	Pump Casing	1	Gray Iron Casting	52B	Lower Bearing	1	※3
21	Impeller	1	Gray Iron Casting	53	Motor Protector	3	
25	Mechanical Seal	1	※1	54	Shaft	1	Stainless Steel 420J2(※5)
26	Oil Seal	1	※2	55	Rotor	1	
29	Oil Casing	1	Gray Iron Casting	56	Stator	1	
30	Oil Lifter	1	Plastic	60	Bearing Housing	1	Gray Iron Casting
35	Oil Plug	1	Stainless Steel 304	64	Motor Frame	1	Gray Iron Casting
36	Lubricant		Turbine Oil (ISO VG32)	72	Eyebolts	2	Stainless Steel 304
37	Discharge Bend	1	Gray Iron Casting				
48	Screwed Flange	1	Gray Iron Casting				