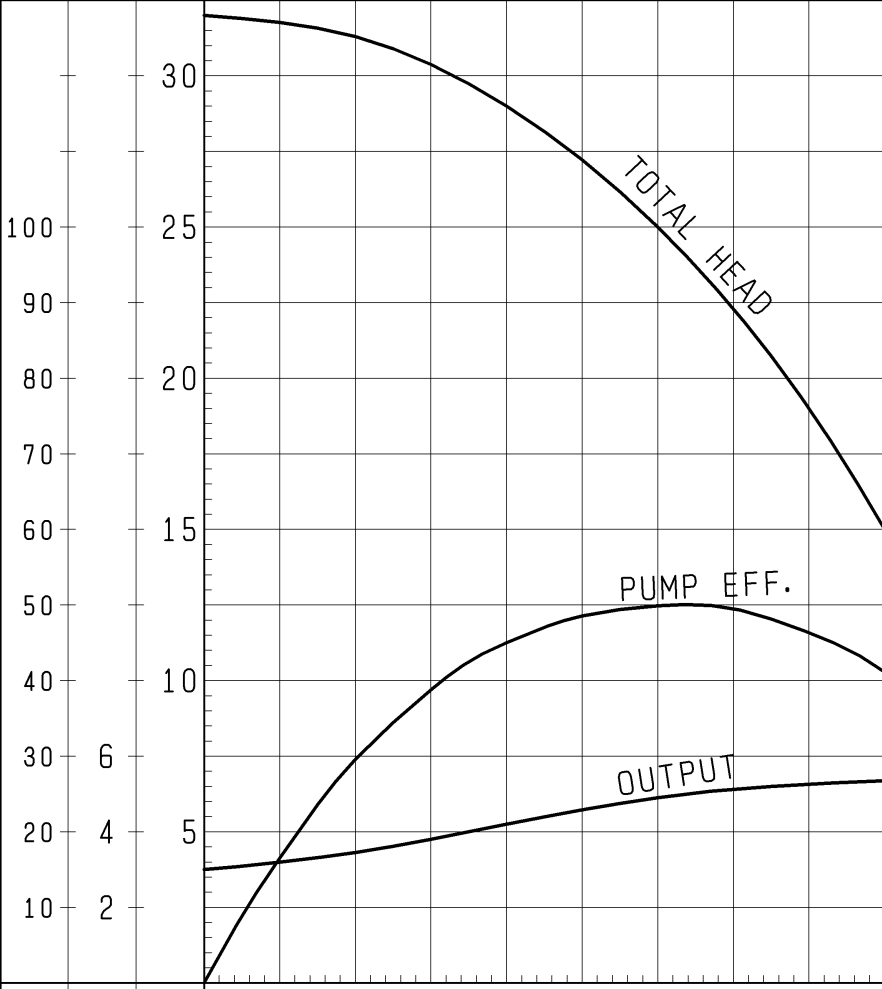


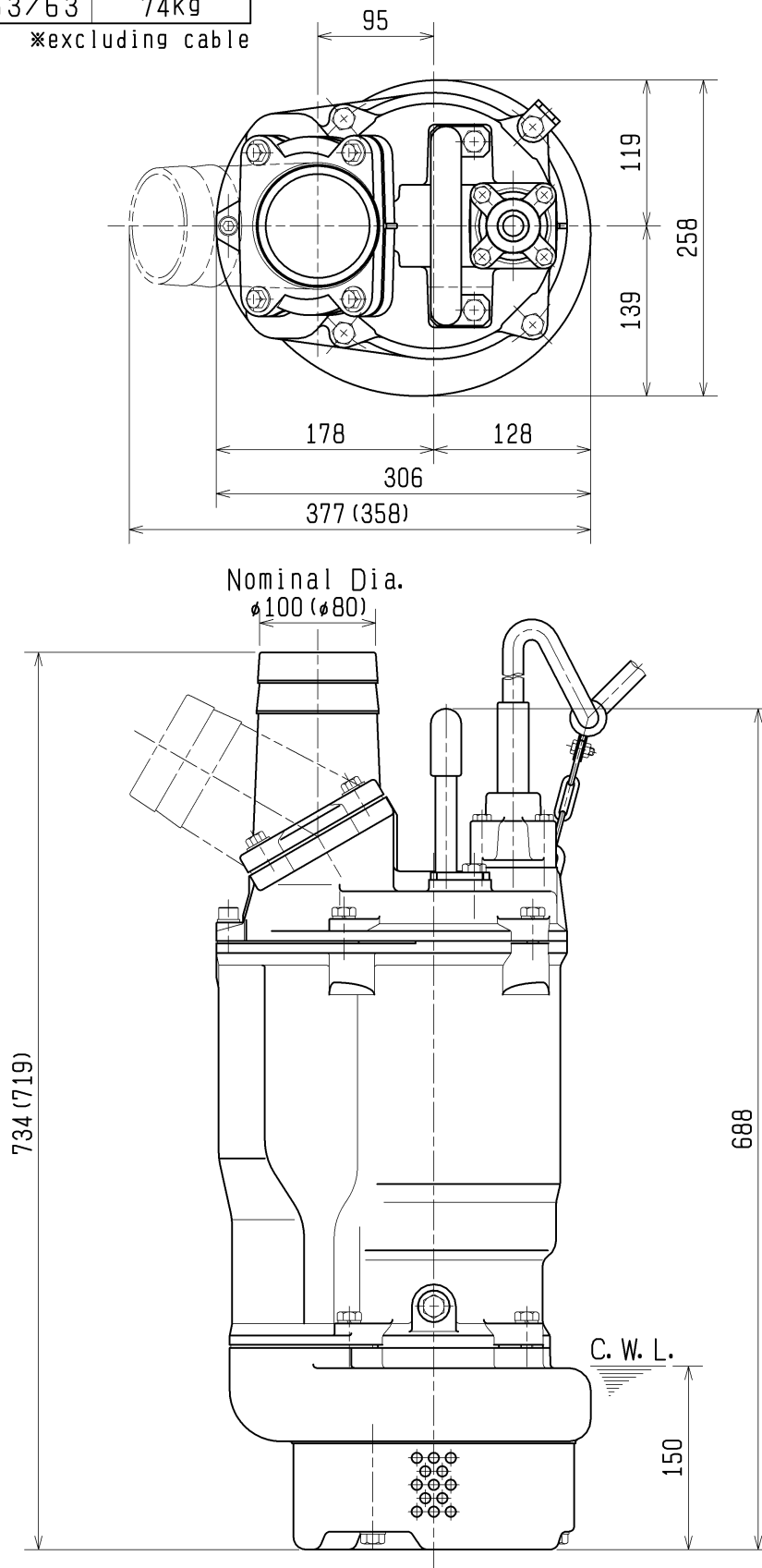
SPECIFICATIONS	Model	KTZ35.5	KTZ-series								
			5.5kW, 3-phase								
<p>Type of Pump Submersible high head drainage pump for construction and foundation works, floodwater drainage, etc.</p> <p>Type of Fluid Stormwater, groundwater, wash water, and sand-carrying water</p> <p>Temperature: 0 to 40°C (High temperature model available on special request)</p> <p>Discharge Bore & Connection 80mm, Hose Coupling</p> <p>Motor Output 5.5kW</p> <p>Power Supply Three-phase</p> <p>Starting Method Direct on Line (Star-Delta available on special request)</p> <p>Motor Continuous-duty rated, dry-type induction motor</p> <p>Insulation Class: F Degree of Protection: IP68</p> <p>No. of Poles & Speed (Synchronous Speed) 2-pole, 3000/3600min⁻¹ (50/60Hz)</p> <p>Power Supply Voltages & Rated Currents</p> <table><tr><td>50Hz</td><td>60Hz</td></tr><tr><td>380V – 11.6A</td><td>220V – 20.1A</td></tr><tr><td>400V – 11.4A</td><td>380V – 11.5A</td></tr><tr><td>415V – 11.3A</td><td>440V – 10.2A</td></tr></table> <p>Power Cable Sheath: Chloroprene rubber Standard Length: 8m 200 to 600V supply: 1 x 4 x 3.5mm², O.D. 16.8mm</p> <p>Dry Weight (excluding cable) 74kg</p>		50Hz	60Hz	380V – 11.6A	220V – 20.1A	400V – 11.4A	380V – 11.5A	415V – 11.3A	440V – 10.2A	<p>Impeller Semi-open Impeller made of high-chromium cast iron</p> <p>Solids Passage 50Hz – ϕ8.5mm 60Hz – ϕ8.5mm</p> <p>Cable Entry with Anti-Wicking Block Watertight cable entry with strain-relief device. The anti-wicking block prevents water incursion due to capillary action should the power cable be damaged or the end submerged.</p> <p>Bearing Permanently lubricated, deep-groove, double-shielded C3 ball bearings</p> <p>Shaft 420 stainless steel</p> <p>Shaft Seal (Mechanical Seal) Furnished with a double-face mechanical seal located in oil chamber. Both upper and lower seal faces always run in a clean environment.</p> <p>Upper Seal Face: SiC + SiC Lower Seal Face: SiC + SiC</p> <p>Oil Seal (Lip Seal) Used as a “Dust Seal”, it protects the mechanical seal from abrasive particles.</p> <p>OIL LIFTER (Patented) Equipped in oil chamber. It forcibly supplies lubricating oil to the mechanical seal and continues to supply the oil to the upper seal faces even if lubricant falls below the rated volume.</p> <p>Type of Lubricating Oil & Volume Turbine Oil (ISO VG32), 1100ml</p> <p>Motor Protection Device A circle thermal protector built in the motor housing. Directly cuts the motor circuit if excessive heat builds up or an overcurrent condition occurs in the motor.</p>	
50Hz	60Hz										
380V – 11.6A	220V – 20.1A										
400V – 11.4A	380V – 11.5A										
415V – 11.3A	440V – 10.2A										
TSURUMI MANUFACTURING CO., LTD.											

		NO.		A-21095-1																																	
PUMP PERFORMANCE CURVES																																					
TYPE		SUBMERSIBLE GENERAL DEWATERING PUMP		MODEL																																	
				KTZ35.5 -53																																	
				FREQUENCY																																	
				50 Hz																																	
CUSTOMER'S NAME																																					
EQUIPMENT TITLE																																					
NO.																																					
		STANDARD SPECIFICATIONS		REQUIRED SPECIFICATIONS																																	
DISCHARGE BORE		80 mm		mm																																	
TOTAL HEAD		MAX. 32 m		m																																	
CAPACITY		MAX. 1.1 m ³ /min		m ³ /min																																	
MOTOR OUTPUT		5.5 kW		kW																																	
PHASE × VOLTAGE		3 φ × V		φ × V																																	
CURRENT		A		A																																	
POLES / REVOLUTION		2 P / S. S. 3000 min ⁻¹		P / min ⁻¹																																	
STARTING METHOD		DIRECT ON LINE																																			
INSULATION CLASS		F																																			
				REMARKS:																																	
 <p>The graph displays three performance curves for the pump. The x-axis represents Capacity in m³/min, ranging from 0 to 1.2. The left y-axis represents Head in meters (m), ranging from 0 to 30. The right y-axis represents Pump Efficiency in percent (%), ranging from 0 to 100. The 'TOTAL HEAD' curve starts at approximately 32m at 0 m³/min and decreases to about 18m at 1.1 m³/min. The 'PUMP EFF.' curve starts at 0% at 0 m³/min, peaks at approximately 50% efficiency at 0.6 m³/min, and then decreases. The 'OUTPUT' curve starts at approximately 4.5 kW at 0 m³/min and increases to about 5.5 kW at 1.1 m³/min.</p> <table border="1"><thead><tr><th>CAPACITY (m³/min)</th><th>TOTAL HEAD (m)</th><th>PUMP EFF. (%)</th><th>OUTPUT (kW)</th></tr></thead><tbody><tr><td>0.0</td><td>32</td><td>0</td><td>4.5</td></tr><tr><td>0.2</td><td>30</td><td>10</td><td>4.8</td></tr><tr><td>0.4</td><td>27</td><td>35</td><td>5.0</td></tr><tr><td>0.6</td><td>23</td><td>50</td><td>5.2</td></tr><tr><td>0.8</td><td>18</td><td>45</td><td>5.4</td></tr><tr><td>1.0</td><td>12</td><td>30</td><td>5.5</td></tr><tr><td>1.1</td><td>18</td><td>20</td><td>5.5</td></tr></tbody></table>				CAPACITY (m ³ /min)	TOTAL HEAD (m)	PUMP EFF. (%)	OUTPUT (kW)	0.0	32	0	4.5	0.2	30	10	4.8	0.4	27	35	5.0	0.6	23	50	5.2	0.8	18	45	5.4	1.0	12	30	5.5	1.1	18	20	5.5		
CAPACITY (m ³ /min)	TOTAL HEAD (m)	PUMP EFF. (%)	OUTPUT (kW)																																		
0.0	32	0	4.5																																		
0.2	30	10	4.8																																		
0.4	27	35	5.0																																		
0.6	23	50	5.2																																		
0.8	18	45	5.4																																		
1.0	12	30	5.5																																		
1.1	18	20	5.5																																		
TSURUMI MFG. CO., LTD.																																					

DIMENSION DRAWING		No.	No.	A-21105-1
TYPE	SUBMERSIBLE GENERAL DEWATERING PUMP	MODEL	KTZ35.5 -53/63 KTZ45.5 -53/63	

MODEL	Approximate Weight (※)
KTZ35.5-53/63	74kg
KTZ45.5-53/63	74kg

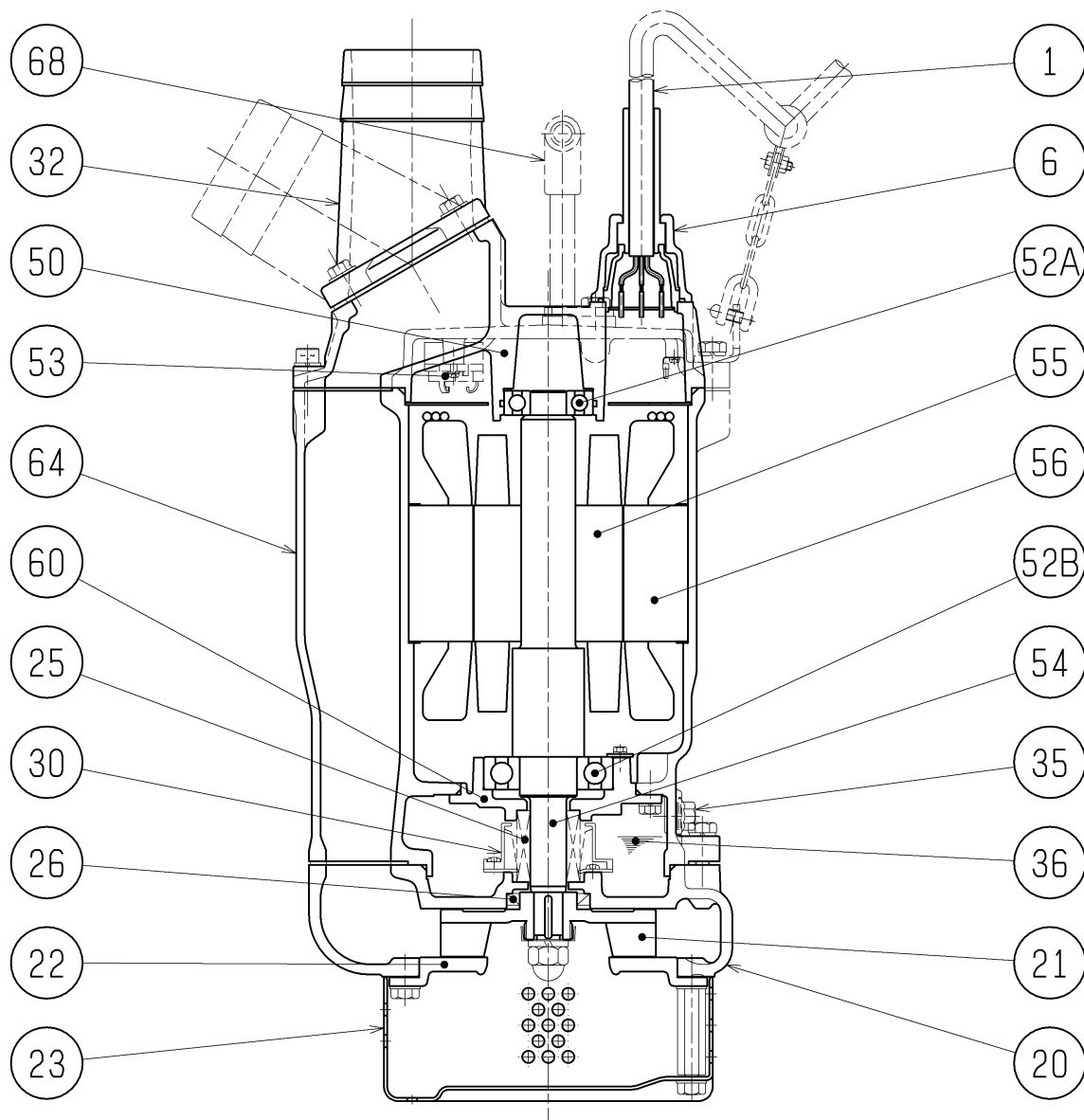
※excluding cable



The Figure in () shows the dimensions of KTZ35.5.

C. W. L. :Continuous running Water Level

SECTIONAL DRAWING		No.	No.	A-21109-1
TYPE	SUBMERSIBLE GENERAL DEWATERING PUMP	MODEL	KTZ35.5 -53/63 KTZ45.5 -53/63	



REQ. SPECIFICATION

No.	DESCRIPTION	Q'TY	MATERIAL / NOTE	No.	DESCRIPTION	Q'TY	MATERIAL / NOTE
1	Cable	1	Chloroprene Sheath	50	Motor Bracket	1	Gray Iron Casting
6	Stuffing Box	1	Gray Iron Casting	52A	Upper Bearing	1	6305ZZC3
20	Pump Casing	1	Gray Iron Casting	52B	Lower Bearing	1	6308ZZC3
21	Impeller	1	Chromium Iron Casting	53	Motor Protector	1	
22	Suction Cover	1	Ductile Iron Casting	54	Shaft	1	Stainless Steel 420J2
23	Strainer Stand	1	Steel Sheet	55	Rotor	1	
25	Mechanical Seal	1	H-25T	56	Stator	1	
26	Oil Seal	1	TC40588	60	Bearing Housing	1	Gray Iron Casting
30	Oil Lifter	1	Plastic	64	Motor Frame	1	Gray Iron Casting
32	Hose Coupling	1	Aluminium Die Casting	68	Handle	1	Carbon Steel Pipe & Structure Steel
35	Oil Plug	1	Stainless Steel 304				
36	Lubricant		Turbine Oil (ISO VG32)				