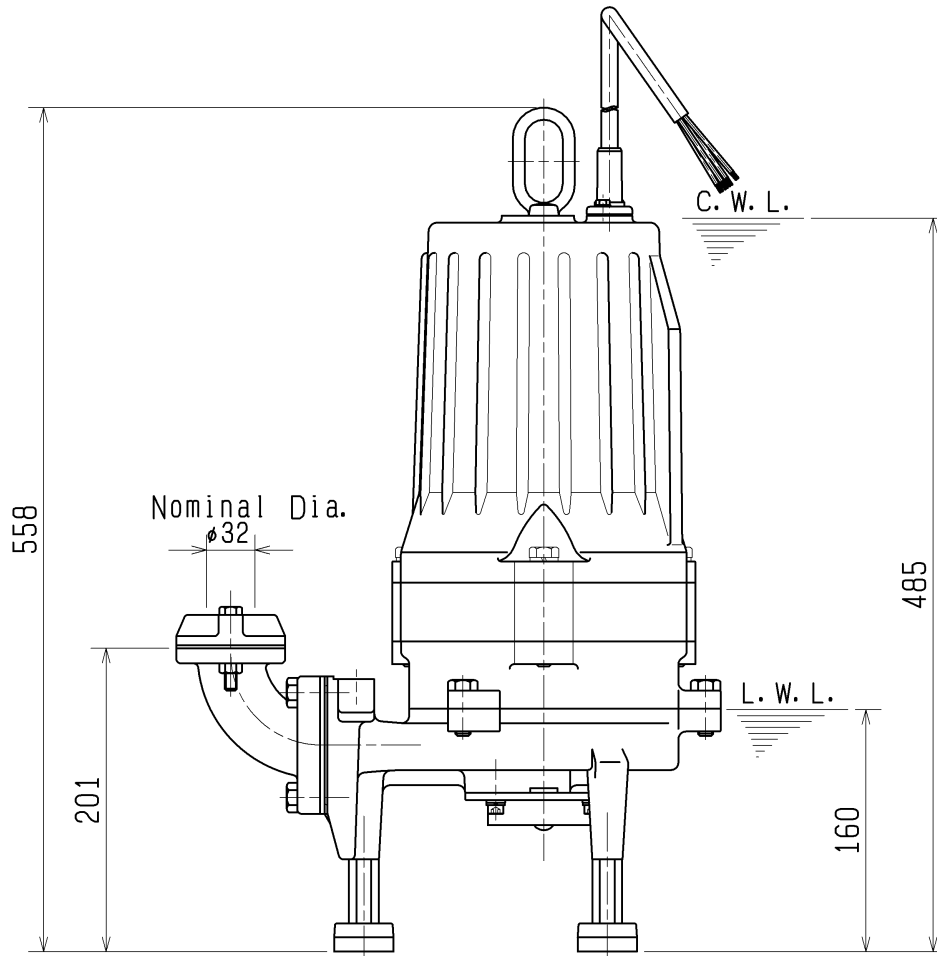
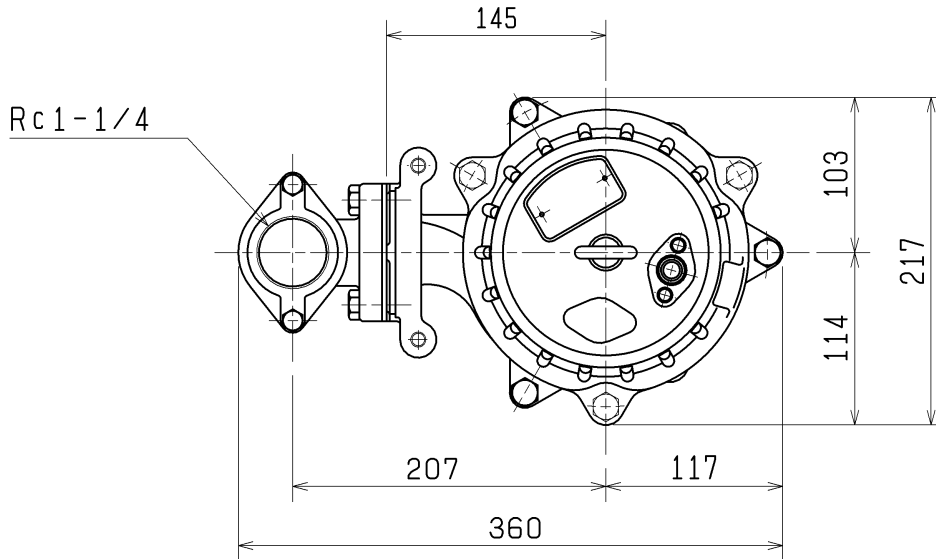


SPECIFICATIONS	Model	32MG21.5							
		MG-series 1.5kW, 3-phase							
<p>Type of Pump Submersible cast iron pump with a grinding mechanism suitable for pumping sewage and wastewater</p> <p>Type of Fluid Sewage, wastewater, and water carrying solid matters</p> <p>Temperature: 0 to 40°C</p> <p>Discharge Bore 32mm</p> <p>Motor Output 1.5kW</p> <p>Power Supply Three-phase</p> <p>Starting Method Direct on Line</p> <p>Motor Continuous-duty rated, dry-type induction motor</p> <p>Insulation Class: F Degree of Protection: IP68</p> <p>No. of Poles & Speed (Synchronous Speed) 2-pole, 3000/3600min⁻¹ (50/60Hz)</p> <p>Power Supply Voltages & Rated Currents</p> <table border="0"> <tr> <td>50Hz</td> <td>60Hz</td> </tr> <tr> <td>380V – 3.8A</td> <td>220V – 6.6A</td> </tr> <tr> <td>400V – 3.8A</td> <td>380V – 3.8A</td> </tr> <tr> <td>415V – 3.9A</td> <td>440V – 3.3A</td> </tr> </table> <p>Power Cable Sheath: PVC Standard Length: 6m 200 to 600V supply: 1 × 4 × 1.25mm², O.D. 11.1mm</p> <p>Dry Weight (excluding cable) Free Standing Type: 36kg Guide Rail Fitting Type: 35kg</p>	50Hz	60Hz	380V – 3.8A	220V – 6.6A	400V – 3.8A	380V – 3.8A	415V – 3.9A	440V – 3.3A	<p>Impeller Vortex impeller designed for “high-gap structure”, dynamically balanced</p> <p>Cable Entry with Anti-Wicking Block Watertight cable entry with strain-relief device. The anti-wicking block prevents water incursion due to capillary action should the power cable be damaged or the end submerged.</p> <p>Bearings Permanently lubricated, deep-groove, double-shielded C3 ball bearings</p> <p>Shaft 420 stainless steel</p> <p>Shaft Seal (Mechanical Seal) Furnished with a double-face mechanical seal located in oil chamber. Both upper and lower seal faces always run in a clean environment.</p> <p>Upper Seal Faces: Ceramic + Carbon Lower Seal Faces: SiC + SiC</p> <p>Oil Seal (Lip Seal) Used as a “Dust Seal”, it protects the mechanical seal from abrasive particles.</p> <p>OIL LIFTER (Patented) Equipped in oil chamber. It forcibly supplies lubricating oil to the mechanical seal and continues to supply the oil to the upper seal faces even if lubricant falls below the rated volume.</p> <p>Type of Lubricating Oil & Volume Turbine Oil (ISO VG32), 1050ml</p> <p>Motor Protection Device A circle thermal protector built in the motor housing. Directly cuts the motor circuit if excessive heat builds up or an overcurrent condition occurs in the motor.</p>
50Hz	60Hz								
380V – 3.8A	220V – 6.6A								
400V – 3.8A	380V – 3.8A								
415V – 3.9A	440V – 3.3A								
<p>Optional Accessory</p> <p>External Leakage Sensor</p>									
TSURUMI MANUFACTURING CO., LTD.									

DIMENSION DRAWING		No.	No. A-11494-2
TYPE	Sewage Submersible Grinder Pump	MODEL	32MG21.2 -52/62 32MG21.5 -52/62

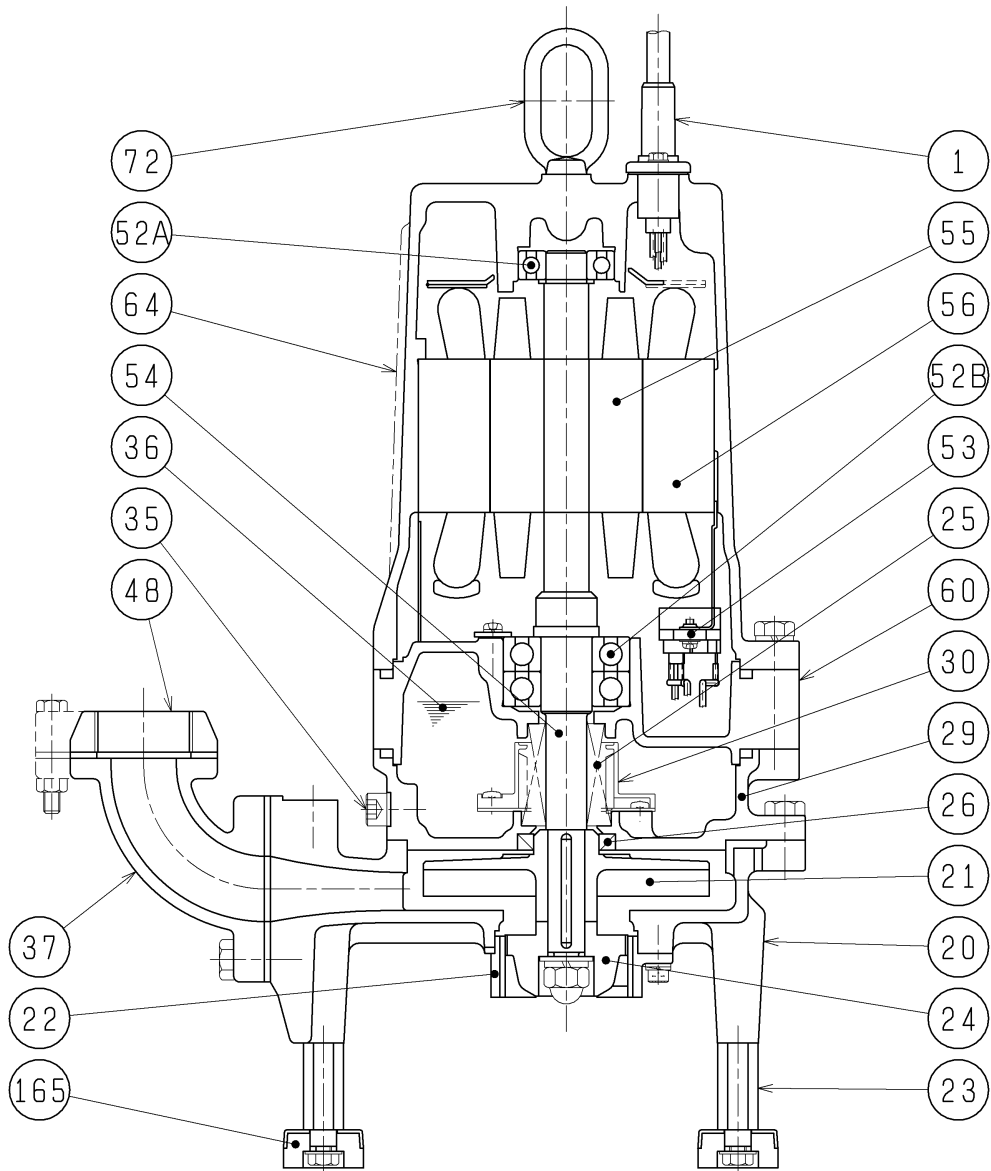
MODEL	Approximate Weight (※)
32MG21.2-52/62	36kg
32MG21.5-52/62	36kg

※excluding cable



C.W.L. :Continuous Running Water Level
L.W.L. :Lowest Running Water Level

SECTIONAL DRAWING		No.	No. A-11496-3
TYPE	Sewage Submersible Grinder Pump	MODEL	32MG21.2 -52/62 32MG21.5 -52/62



REQ. SPECIFICATION

※ the wetted part

No.	DESCRIPTION	Q'TY	MATERIAL / NOTE	No.	DESCRIPTION	Q'TY	MATERIAL / NOTE
1	Cable	1	PVC Sheath	48	Screwed Flange	1	Polycarbonate Plastic
20	Pump Casing	1	Gray Iron Casting	52A	Upper Bearing	1	6204ZCC3
21	Impeller	1	Gray Iron Casting	52B	Lower Bearing	1	6305ZZD2C3
22	Stationary Cutter	1	Chromium Iron Casting	53	Motor Protector	1	
23	Stand	3	Stainless Steel 410	54	Shaft	1	Stainless Steel 420J2(※)
24	Rotating Cutter	1	Chromium Iron Casting	55	Rotor	1	
25	Mechanical Seal	1	H-20A	56	Stator	1	
26	Oil Seal	1	TC32488	60	Bearing Housing	1	Gray Iron Casting
29	Oil Casing	1	Gray Iron Casting	64	Motor Frame	1	Gray Iron Casting
30	Oil Lifter	1	Plastic	72	Eye Bolt	1	Stainless Steel 304
35	Oil Plug	1	Stainless Steel 304	165	Rubber Foot	3	Nitrile Butadien Rubber
36	Lubricant		Turbine Oil (ISO VG32)				
37	Discharge Bend	1	Gray Iron Casting				